

CAT WALK



ANGLES

A DIVISION OF AGF

FREE PATTERN



CAT WALK

QUILT DESIGNED BY JESSICA SWIFT



OH, MEOW!

FABRICS DESIGNED BY JESSICA SWIFT



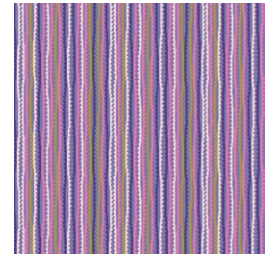
OHM-33440
KATTALAND FLORA



OHM-33441
CAT NAP



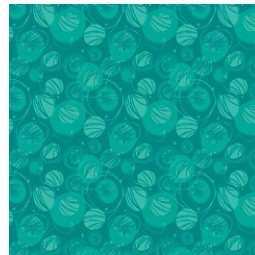
OHM-33442
KITTEN AROUND



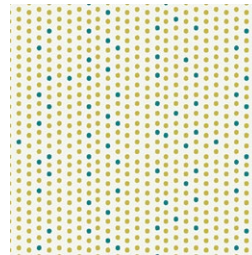
OHM-33443
UNTANGLED STRINGS



OHM-33444
PURRRRLANDIA



OHM-33445
CATURDAY FUN



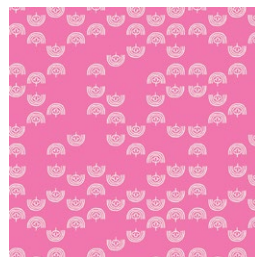
OHM-33446
PAW-SOME DAY



OHM-33447
FELINE GOOD



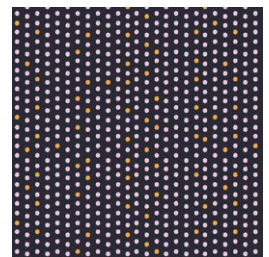
OHM-33448
CATITUDE SLUMBER



OHM-33449
MEOWTAIN MEADOWS



OHM-33450
CATITUDE SNOOZE



OHM-33451
PAW-SOME NIGHT



ADDITIONAL BLENDERS FOR THIS PROJECT



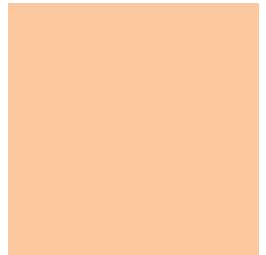
DSE-700
CLOUD



PE-464
WARM WAVE



PE-486
VANILLA CUSTARD



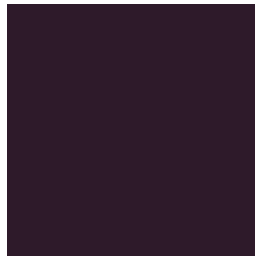
PE-444
PEACH SHERBET



PE-495
FIELD OF LAVENDER



PE-407
EMPIRE YELLOW



PE-400
CABERNET

CAT WALK

FINISHED SIZE | 35¼" x 51"

FABRIC REQUIREMENTS

Fabric A	OMH-33447	F8
Fabric B	OMH-33449	F8
Fabric C	OMH-33440	F8
Fabric D	OMH-33451	F8
Fabric E	OMH-33441	½ yd.
Fabric F	OMH-33445	F8
Fabric G	OMH-33443	F8
Fabric H	OMH-33444	F8
Fabric I	OMH-33448	F8
Fabric J	OMH-33450	F8
Fabric K	OMH-33446	F8
Fabric L	DSE-700	1⅝ yd.
Fabric M	PE-464	¼ yd.
Fabric N	PE-486	F8
Fabric O	PE-444	F8
Fabric P	PE-495	F8
Fabric Q	PE-407	F8
Fabric R	PE-400	F8

BINDING FABRIC
OMH-33441 (Fabric **E**) *(Included)*

BACKING FABRIC
OMH-33442 1¾ yds. *(Suggested)*

CUTTING DIRECTIONS

¼" seam allowances are included.
WOF means width of fabric.

- One (1) 2¼" x 2½" rectangle from fabric **A**.
- Two (2) 5½" x 2½" rectangles from fabric **A**.
- One (1) 3" x 2½" rectangle from fabric **B**.
- One (1) 3¼" x 2½" rectangle from fabric **B**.

- Two (2) 4½" x 2½" rectangles from fabric **B**.
- One (1) 10½" x 2½" rectangle from fabric **B**.
- One (1) 12½" x 2½" rectangle from fabric **B**.
- Three (3) 2½" squares from fabric **C**.
- Two (2) 5½" x 2½" rectangles from fabric **C**.
- One (1) 12¼" x 2½" rectangle from fabric **C**.
- Three (3) 2½" squares from fabric **D**.
- One (1) 4½" x 2½" rectangle from fabric **D**.
- One (1) 5½" x 2½" rectangle from fabric **D**.
- One (1) 8½" x 2½" rectangle from fabric **D**.
- One (1) 2" x 2½" rectangle from fabric **E**.
- One (1) 2¼" x 2½" rectangles from fabric **E**.
- One (1) 4½" x 2½" rectangle from fabric **E**.
- One (1) 5½" x 2½" rectangle from fabric **E**.
- One (1) 6½" x 2½" rectangle from fabric **E**.
- One (1) 8½" x 2½" rectangle from fabric **E**.
- One (1) 2½" square from fabric **F**.
- Three (3) 3½" x 2½" rectangles from fabric **F**.
- One (1) 4½" x 2½" rectangle from fabric **F**.
- One (1) 8½" x 2½" rectangle from fabric **F**.
- Two (2) 10½" x 2½" rectangles from fabric **F**.
- One (1) 2½" square from fabric **G**.
- One (1) 3½" x 2½" rectangle from fabric **G**.
- Two (2) 3¼" x 2½" rectangles from fabric **G**.
- One (1) 5½" x 2½" rectangle from fabric **G**.
- One (1) 6" x 2½" rectangle from fabric **G**.
- One (1) 6½" x 2½" rectangle from fabric **G**.
- Two (2) 5½" x 2½" rectangles from fabric **H**.
- Six (6) 8½" x 2½" rectangles from fabric **H**.
- One (1) 2¼" x 2½" square from fabric **I**.
- Two (2) 3½" x 2½" rectangles from fabric **I**.
- Two (2) 5½" x 2½" rectangles from fabric **I**.
- Two (2) 8½" x 2½" rectangles from fabric **I**.

- One (1) $2\frac{1}{4}$ " x $2\frac{1}{2}$ " rectangle from fabric **J**.
- One (1) $2\frac{1}{2}$ " square from fabric **J**.
- One (1) $6\frac{1}{2}$ " x $2\frac{1}{2}$ " rectangle from fabric **J**.
- One (1) $12\frac{1}{4}$ " x $2\frac{1}{2}$ " rectangle from fabric **J**.
- One (1) $2\frac{1}{4}$ " x $2\frac{1}{2}$ " rectangle from fabric **K**.
- One (1) $3\frac{1}{2}$ " x $2\frac{1}{2}$ " rectangle from fabric **K**.
- Fourteen (14) $35\frac{3}{4}$ " x $1\frac{1}{4}$ " strips from fabric **L**.
- Sixty Seven (67) $1\frac{1}{4}$ " x $2\frac{1}{2}$ " rectangles from fabric **L**.
- One (1) $35\frac{3}{4}$ " x 13 " rectangle from fabric **L**.
- One (1) $2\frac{1}{4}$ " x $2\frac{1}{2}$ " rectangle from fabric **M**.
- One (1) $3\frac{1}{4}$ " x $2\frac{1}{2}$ " rectangle from fabric **M**.
- One (1) $5\frac{1}{2}$ " x $2\frac{1}{2}$ " rectangle from fabric **M**.
- One (1) $12\frac{1}{4}$ " x $2\frac{1}{2}$ " rectangle from fabric **M**.
- One (1) $35\frac{3}{4}$ " x $2\frac{1}{2}$ " rectangle from fabric **M**.
- Two (2) $3\frac{1}{2}$ " x $2\frac{1}{2}$ " rectangles from fabric **N**.
- One (1) $12\frac{1}{4}$ " x $2\frac{1}{2}$ " rectangle from fabric **N**.
- One (1) $2\frac{1}{4}$ " x $2\frac{1}{2}$ " rectangle from fabric **O**.
- One (1) $2\frac{1}{2}$ " square from fabric **O**.
- One (1) $3\frac{1}{2}$ " x $2\frac{1}{2}$ " rectangle from fabric **O**.
- One (1) $4\frac{1}{2}$ " x $2\frac{1}{2}$ " rectangle from fabric **O**.
- One (1) $5\frac{1}{2}$ " x $2\frac{1}{2}$ " rectangle from fabric **O**.
- One (1) $8\frac{1}{2}$ " x $2\frac{1}{2}$ " rectangle from fabric **O**.
- One (1) $8\frac{1}{2}$ " x $2\frac{1}{2}$ " rectangle from fabric **P**.
- One (1) $12\frac{1}{4}$ " x $2\frac{1}{2}$ " rectangle from fabric **P**.
- One (1) $2\frac{1}{2}$ " square from fabric **Q**.
- One (1) $12\frac{1}{4}$ " x $2\frac{1}{2}$ " rectangle from fabric **Q**.
- One (1) template 1 from fabric **R**.

CONSTRUCTION

Sew all rights sides together with $\frac{1}{4}$ " seam allowance.

- Take sixty seven (67) $1\frac{1}{4}$ " x $2\frac{1}{2}$ " rectangles from fabric **L**, and all the squares and rectangles with a height of $2\frac{1}{2}$ " from fabrics **A**, **B**, **C**, **D**, **E**, **F**, **G**, **H**, **I**, **J**, **K**, **M**, **N**, **O**, **P**, and **Q**.
- Join them into the following rows:
 - **Row 1:** **B** ($3\frac{1}{4}$ "), **L**, **F** ($4\frac{1}{2}$ "), **L**, **E** ($6\frac{1}{2}$ "), **L**, **N** ($3\frac{1}{2}$ "), **L**, **C** ($5\frac{1}{2}$ "), **L**, **H** ($8\frac{1}{2}$ "), **L**, **D** ($2\frac{1}{2}$ ").
 - **Row 2:** **E** ($2\frac{1}{2}$ "), **L**, **O** ($3\frac{1}{2}$ "), **L**, **I** ($5\frac{1}{2}$ "), **L**, **H** ($8\frac{1}{2}$ "), **L**, **D** ($2\frac{1}{2}$ "), **L**, **C** ($12\frac{1}{4}$ ").
 - **Row 3:** **F** ($2\frac{1}{2}$ "), **L**, **H** ($8\frac{1}{2}$ "), **L**, **E** ($5\frac{1}{2}$ "), **L**, **I** ($3\frac{1}{2}$ "), **L**, **J** ($6\frac{1}{2}$ "), **L**, **O** ($4\frac{1}{2}$ "), **L**, **G** ($3\frac{1}{4}$ ").
 - **Row 4:** **J** ($12\frac{1}{4}$ "), **L**, **C** ($2\frac{1}{2}$ "), **L**, **P** ($8\frac{1}{2}$ "), **L**, **H** ($5\frac{1}{2}$ "), **L**, **F** ($3\frac{1}{2}$ "), **L**, **M** ($2\frac{1}{4}$ ").
 - **Row 5:** **N** ($3\frac{1}{2}$ "), **L**, **B** ($4\frac{1}{2}$ "), **L**, **F** ($10\frac{1}{2}$ "), **L**, **M** ($5\frac{1}{2}$ "), **L**, **I** ($8\frac{1}{2}$ "), **L**, **J** (2 ").
 - **Row 6:** **K** ($2\frac{1}{4}$ "), **L**, **G** ($3\frac{1}{2}$ "), **L**, **I** ($5\frac{1}{2}$ "), **L**, **H** ($8\frac{1}{2}$ "), **L**, **Q** ($2\frac{1}{2}$ "), **L**, **N** ($12\frac{1}{4}$ ").
 - **Row 7:** **D** ($2\frac{1}{2}$ "), **L**, **H** ($8\frac{1}{2}$ "), **L**, **O** ($5\frac{1}{2}$ "), **L**, **K** ($3\frac{1}{2}$ "), **L**, **G** ($6\frac{1}{2}$ "), **L**, **E** ($4\frac{1}{2}$ "), **L**, **G** ($3\frac{1}{4}$ ").
 - **Row 8:** **M** ($12\frac{1}{4}$ "), **L**, **C** ($2\frac{1}{2}$ "), **L**, **F** ($8\frac{1}{2}$ "), **L**, **D** ($5\frac{1}{2}$ "), **L**, **F** ($3\frac{1}{2}$ "), **L**, **I** ($2\frac{1}{4}$ ").
 - **Row 9:** **O** ($2\frac{1}{4}$ "), **L**, **F** ($3\frac{1}{2}$ "), **L**, **H** ($5\frac{1}{2}$ "), **L**, **D** ($8\frac{1}{2}$ "), **L**, **C** ($2\frac{1}{2}$ "), **L**, **Q** ($12\frac{1}{4}$ ").
 - **Row 10:** **J** ($2\frac{1}{2}$ "), **L**, **I** ($8\frac{1}{2}$ "), **L**, **A** ($5\frac{1}{2}$ "), **L**, **B** ($10\frac{1}{2}$ "), **L**, **D** ($4\frac{1}{2}$ "), **L**, **B** (3 ").
 - **Row 11:** **P** ($12\frac{1}{4}$ "), **L**, **G** ($2\frac{1}{2}$ "), **L**, **O** ($8\frac{1}{2}$ "), **L**, **C** ($5\frac{1}{2}$ "), **L**, **G** (6 ").
 - **Row 12:** **M** ($3\frac{1}{4}$ "), **L**, **B** ($4\frac{1}{2}$ "), **L**, **F** ($10\frac{1}{2}$ "), **L**, **G** ($5\frac{1}{2}$ "), **L**, **E** ($8\frac{1}{2}$ "), **L**, **A** ($2\frac{1}{4}$ ").
 - **Row 13:** **E** (2 "), **L**, **I** ($3\frac{1}{2}$ "), **L**, **A** ($5\frac{1}{2}$ "), **L**, **H** ($8\frac{1}{2}$ "), **L**, **O** ($2\frac{1}{2}$ "), **L**, **B** ($12\frac{1}{2}$ ").
- For fabric placement and attachment follow diagram 1.

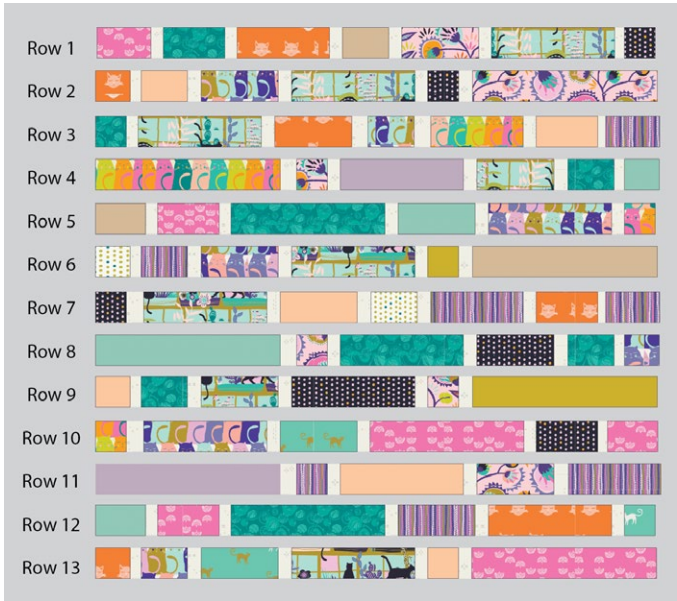


DIAGRAM 1

- Take fourteen (14) $35\frac{3}{4}$ " x $1\frac{1}{4}$ " strips from fabric L and one (1) $35\frac{3}{4}$ " x $2\frac{1}{2}$ " rectangle from fabric M.
- Join them to the rows as follows:
- M, L, Row 1, L, Row 2, L, Row 3, L, Row 4, L, Row 5, L, Row 6, L, Row 7, L, Row 8, L, Row 9, L, Row 10, L, Row 11, L, Row 12, L, Row 13, L.
- For fabric placement and attachment follow diagram 2.

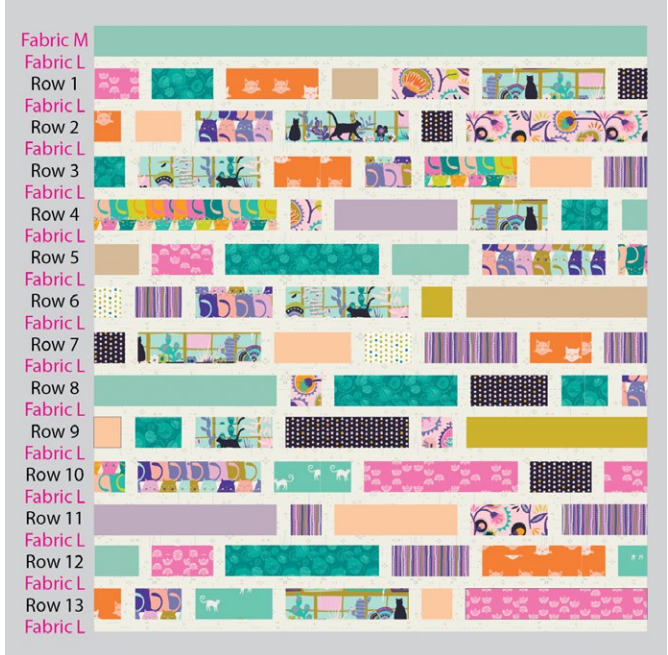


DIAGRAM 2

- Take one (1) $35\frac{3}{4}$ " x 13" rectangle from fabric L and one (1) template 1 from fabric R.
- Join the rectangle from fabric L to the top of the resulting quilt block.
- Applique the template from fabric R on top of the rectangle from fabric L.
- For fabric placement and attachment follow Diagram 3.

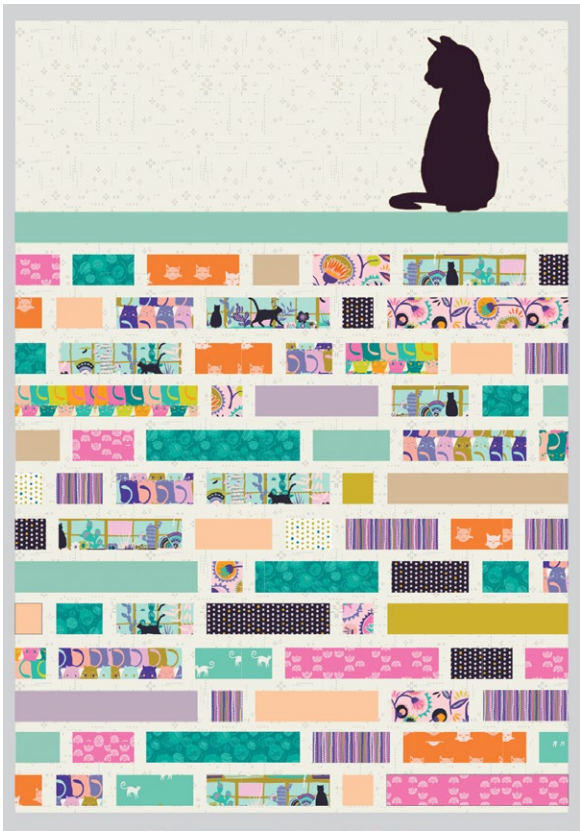


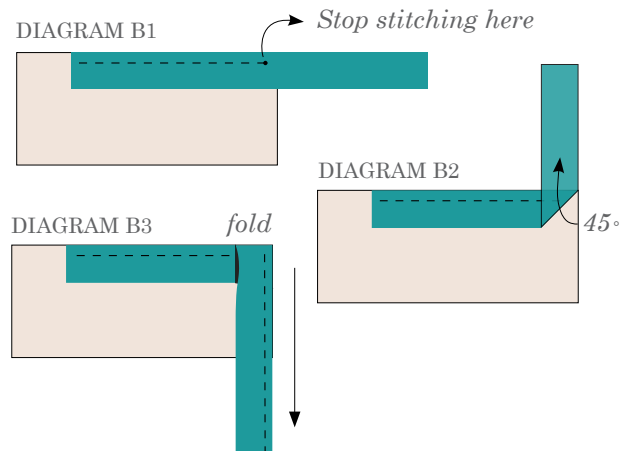
DIAGRAM 3

QUILT ASSEMBLY

Sew rights sides together.

- Place BACKING FABRIC on a large surface wrong side up. Stretch it with masking tape against that surface.
- Place BATTING on top of backing fabric.
- Place TOP on top of the batting with right side facing up. Smooth away wrinkles using your hands.
- Pin all layers together and baste with basting thread, using long stitches. You can also use safety pins to join the layers.
- Machine or hand quilt starting at the center and working towards the corners. Remember that quilting motifs are a matter of personal preference. Have fun choosing yours!
- After you finished, trim excess of any fabric or batting, squaring the quilt to proceed to bind it.

- Stop stitching before you reach the last 5 or 6 inches. Cut the threads and remove the quilt from under the machine presser foot. Lay the loose ends of the binding flat along the quilt edge, folding the ends back on themselves where they meet. Press them together to form a crease. Using this crease as the stitching line, sew the two open ends of the binding with right sides together (you can help yourself marking with a pencil if the crease is difficult to see).
- Trim seam to $\frac{1}{4}$ " and press open. Complete the sewing. Turn binding to back of the quilt, turn raw edge inside and stitch by hand using blind stitch.



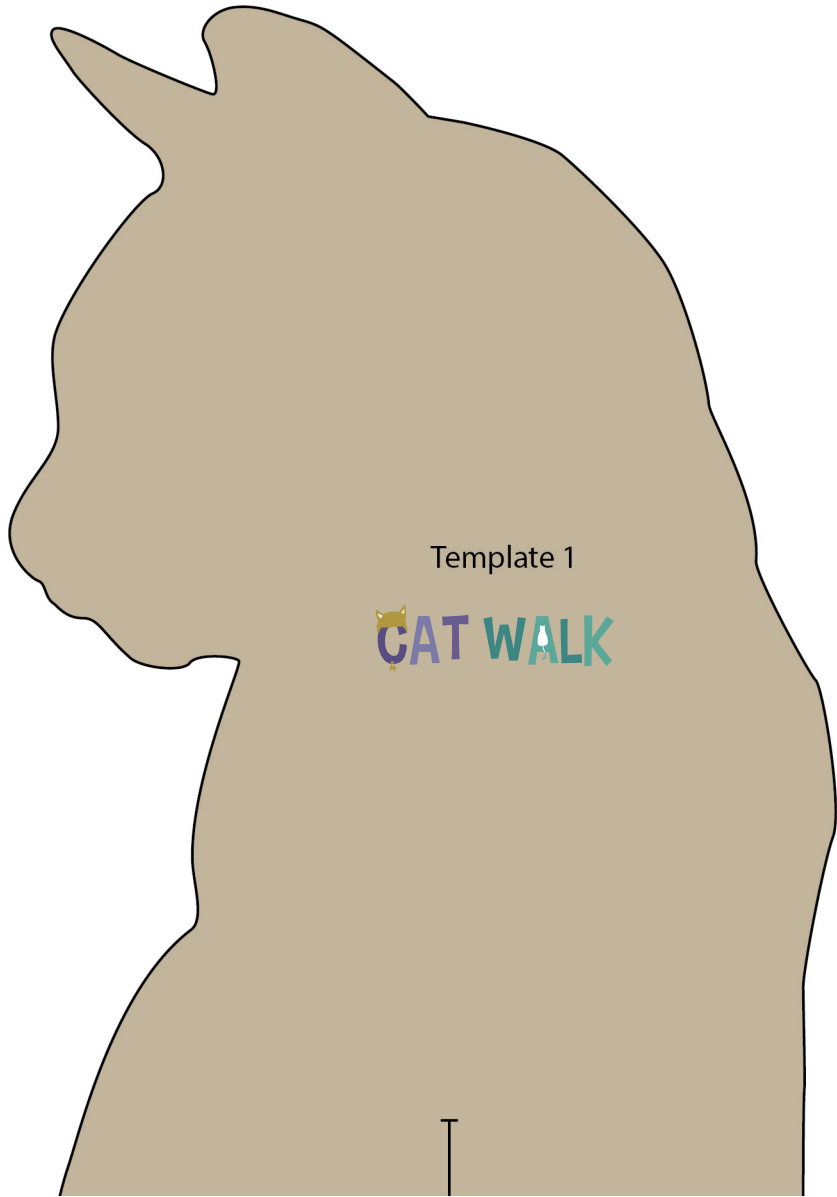
BINDING

Sew rights sides together.

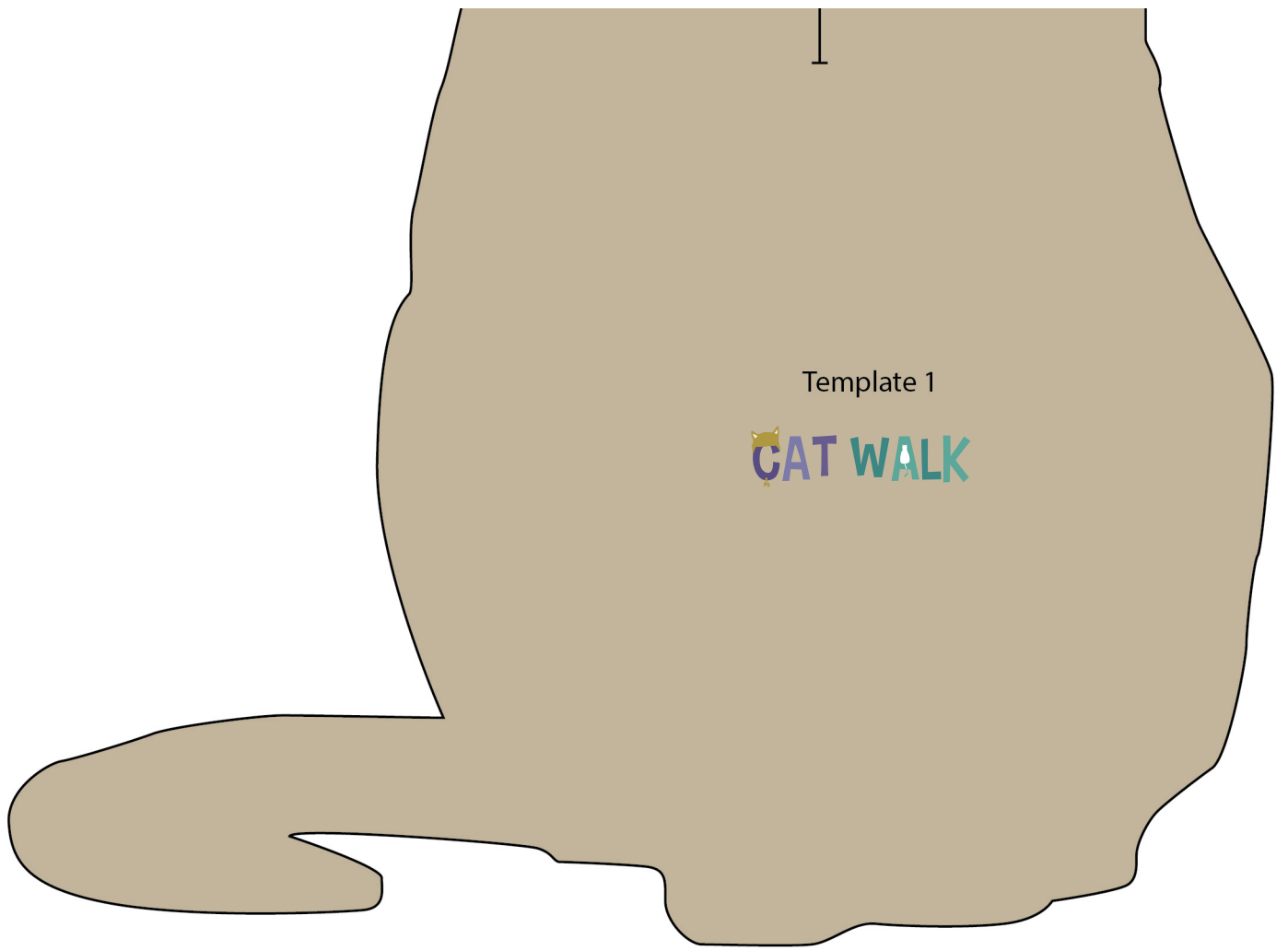
- Cut enough strips $1\frac{1}{2}$ " wide by the width of the fabric **E** to make a final strip 184" long. Start sewing the binding strip in the middle of one of the sides of the quilt, placing the strip right side down and leaving an approximated 5" tail. Sew with $\frac{1}{4}$ " seam allowance (using straight stitch), aligning the strip's raw edge with the quilt top's raw edge.
- Stop stitching $\frac{1}{4}$ " before the edge of the quilt (DIAGRAM B 1). Clip the threads. Remove the quilt from under the machine presser foot. Fold the strip in a motion of 45° and upward, pressing with your fingers (DIAGRAM B2). Hold this fold with your finger, bring the strip down in line with the next edge, making a horizontal fold that aligns with the top edge of the quilt (DIAGRAM B3). Start sewing at $\frac{1}{4}$ " of the border, stitching all the layers. Do the same in the four corners of the quilt.

TEMPLATE

Sew rights sides together.



Template 1





XXXXXXXXXXXXXXXXXXXXXXXXXXXXXXXX

Congratulations
& enjoy

XXXXXXXXXXXXXXXXXXXXXXXXXXXXXXXX



artgalleryfabrics.com

NOTE: While all possible care has been taken to ensure the accuracy of this pattern, We are not responsible for printing errors or the way in which individual work varies.

Please read instructions carefully before starting the construction of this quilt. If desired, wash and iron your fabrics before starting to cut.

© 2021 Courtesy of Art Gallery Quilts LLC. All Rights Reserved.