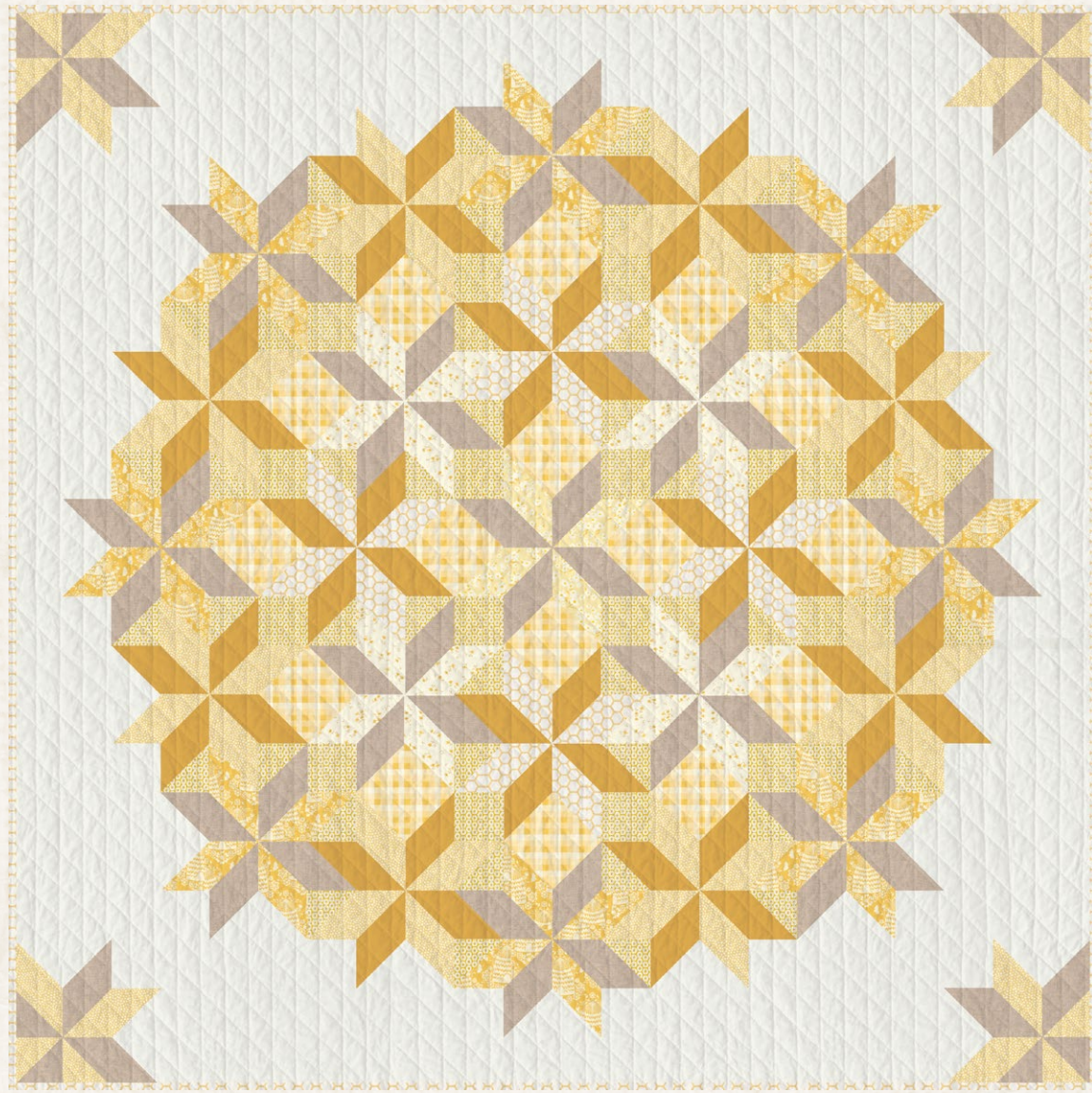


X
X
X
X
X
X
X
X
X
X
X
X
X
X
X
X
X
X
X
X
X
X

Beekeeper



FUSIONS



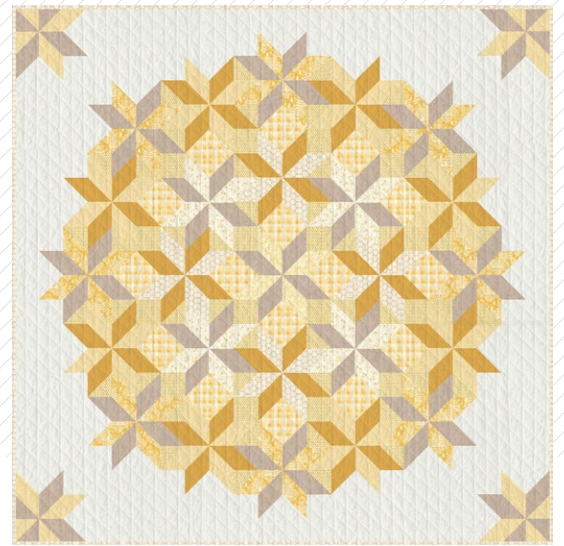
by AGF

FREE PATTERN

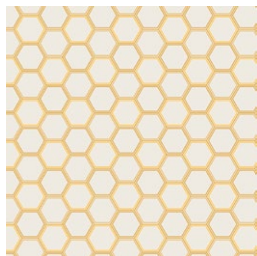
XXXXXXXXXXXXXXXXXXXXXXXXXXXX

Beekeeper

QUILT DESIGNED BY AGFstudio



Honey FUSION



FUSHO2607
HONEYCOMB HONEY
by Bonnie Christine



FUSHO2606
SPRING DAISIES HONEY
by AGF Studio



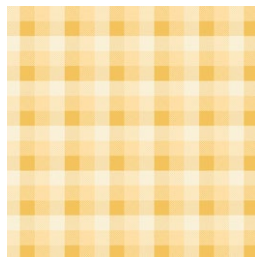
FUSHO2609
OLIVIA HONEY
by Amy Sinbaldi



FUSHO2600
HONEY HOUSE HONEY
by Bonnie Christine



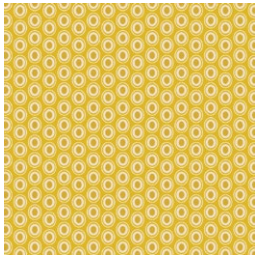
FUSHO2608
SUNSPOTS HONEY
by Maureen Cracknell



FUSHO2602
SUMMER PLAID HONEY
by AGF Studio



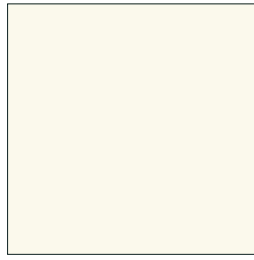
ADDITIONAL BLENDERS FOR THIS PROJECT



OE911
GOLDEN



PE421
HONEY



PE408
WHITE LINEN



DENL4000
SOFT SAND

Beekeeper

FINISHED SIZE | 88" x 88"

FABRIC REQUIREMENTS

Fabric A	FUSHO2607	1 yd.
Fabric B	DENL4000	1 $\frac{1}{8}$ yd.
Fabric C	FUSHO2606	$\frac{3}{8}$ yd.
Fabric D	FUSHO2609	$\frac{5}{8}$ yd.
Fabric E	PE421	1 $\frac{1}{8}$ yd.
Fabric F	FUSHO2600	$\frac{7}{8}$ yd.
Fabric G	OE911	1 $\frac{1}{8}$ yd.
Fabric H	FUSHO2608	1 yd.
Fabric I	FUSHO2602	$\frac{7}{8}$ yd.
Fabric J	PE408	3 $\frac{1}{4}$ yd.

BACKING FABRIC
FUSHO2600 8 yds (*Suggested*)

BINDING FABRIC
Fabric **A** FUSHO2607 (*Included*)

CUTTING DIRECTIONS

*¼" seam allowances are included.
WOF means width of fabric.*

- Five (5) 9 $\frac{3}{4}$ " squares from fabric **A**.
- Nine (9) WOF x 1 $\frac{1}{2}$ " strips from fabric **A**. (Binding)
- Eighteen (18) 9 $\frac{3}{4}$ " squares from fabric **B**.
- Two (2) 9 $\frac{3}{4}$ " squares from fabric **C**.
- Five (5) 9 $\frac{3}{4}$ " squares from fabric **D**.
- Thirteen (13) 9 $\frac{3}{4}$ " squares from fabric **E**.
- Nine (9) 9 $\frac{3}{4}$ " squares from fabric **F**.
- Nine (9) 9 $\frac{3}{4}$ " squares from fabric **G**.
- Sixteen (16) 4 $\frac{1}{2}$ " squares from fabric **G**.
- Twelve (12) 9 $\frac{3}{4}$ " squares from fabric **H**.
- Nine (9) 9 $\frac{3}{4}$ " squares from fabric **I**.
- Eight (8) 9 $\frac{3}{4}$ " squares from fabric **J**.
- Four (4) 32 $\frac{1}{2}$ " x 4 $\frac{1}{2}$ " rectangles from fabric **J**.
- Four (4) 28 $\frac{1}{2}$ " x 4 $\frac{1}{2}$ " rectangles from fabric **J**.
- Four (4) 20 $\frac{1}{2}$ " x 4 $\frac{1}{2}$ " rectangles from fabric **J**.
- Four (4) 16 $\frac{1}{2}$ " x 4 $\frac{1}{2}$ " rectangles from fabric **J**.
- Twelve (12) 12 $\frac{1}{2}$ " x 4 $\frac{1}{2}$ " rectangles from fabric **J**.
- Twelve (12) 8 $\frac{1}{2}$ " x 4 $\frac{1}{2}$ " rectangles from fabric **J**.
- Four (4) 4 $\frac{1}{2}$ " squares from fabric **J**.

CONSTRUCTION

Sew all rights sides together with ¼" seam allowance.

Eight at a time HST (Half Square Triangle)

- Pair one (1) 9 $\frac{3}{4}$ " squares from fabrics **A** and **E** and align both squares right sides facing.
- Draw two diagonal lines on the back of the fabric. (See Fig 2)
- Stitch at ¼" from each side of the drawn lines. (See Fig 3)

- Cut your piece following the red lines. (See Fig 4).
- Open pieces and press.
- Repeat this step one more time with the same fabrics. You should have a total of sixteen (16) **A-E** hst. Each HST should measure $4\frac{1}{2}'' \times 4\frac{1}{2}''$.

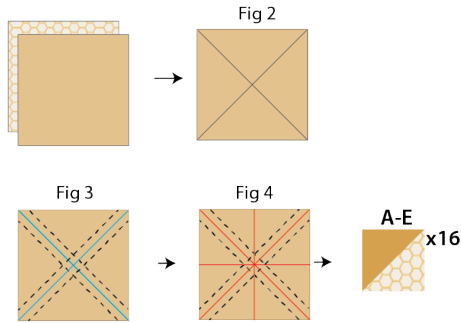


DIAGRAM 1

- Repeat the eight at a time HST method and make the following combinations. See diagrams 2 and 3.

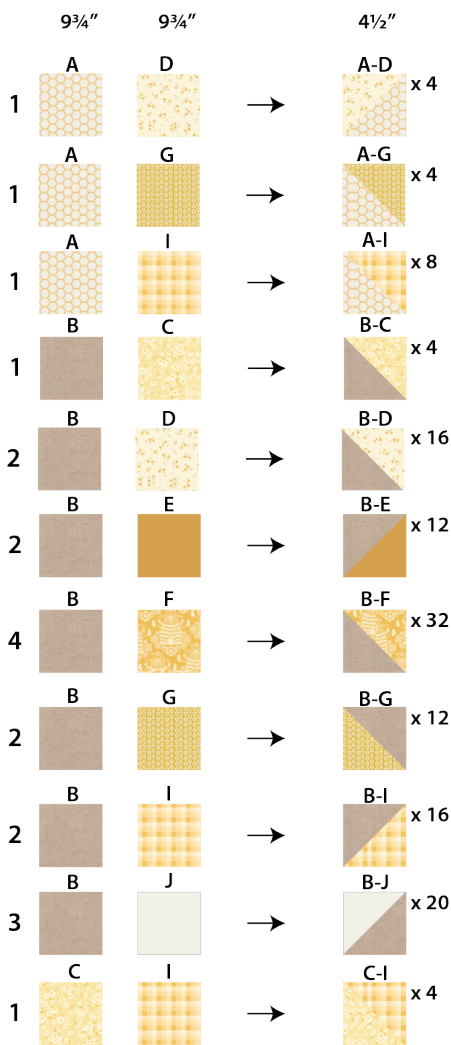


DIAGRAM 2

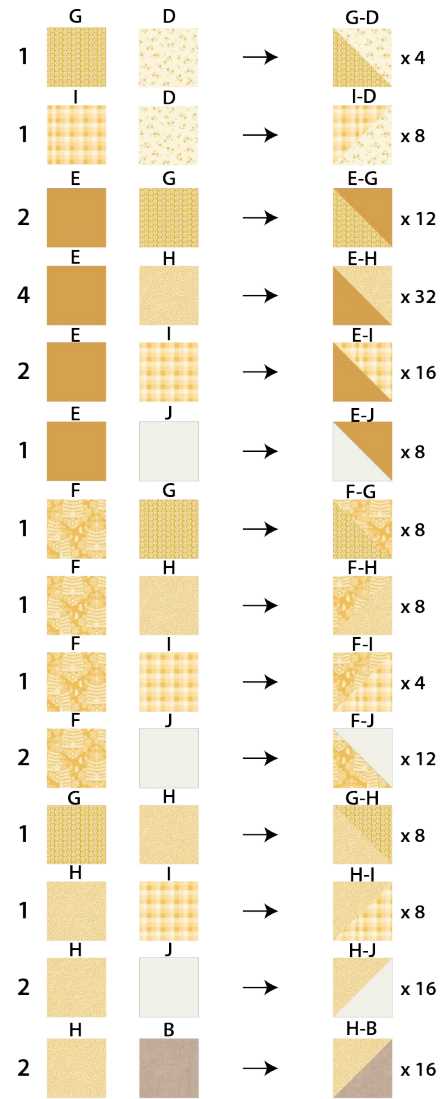


DIAGRAM 3

- After you have all the HST combinations ready we will make four (4) identical blocks.
- For HST placements and attachments see diagram 4.

- Arrange HST and fabric J rectangles into eleven rows. See diagram below for reference.

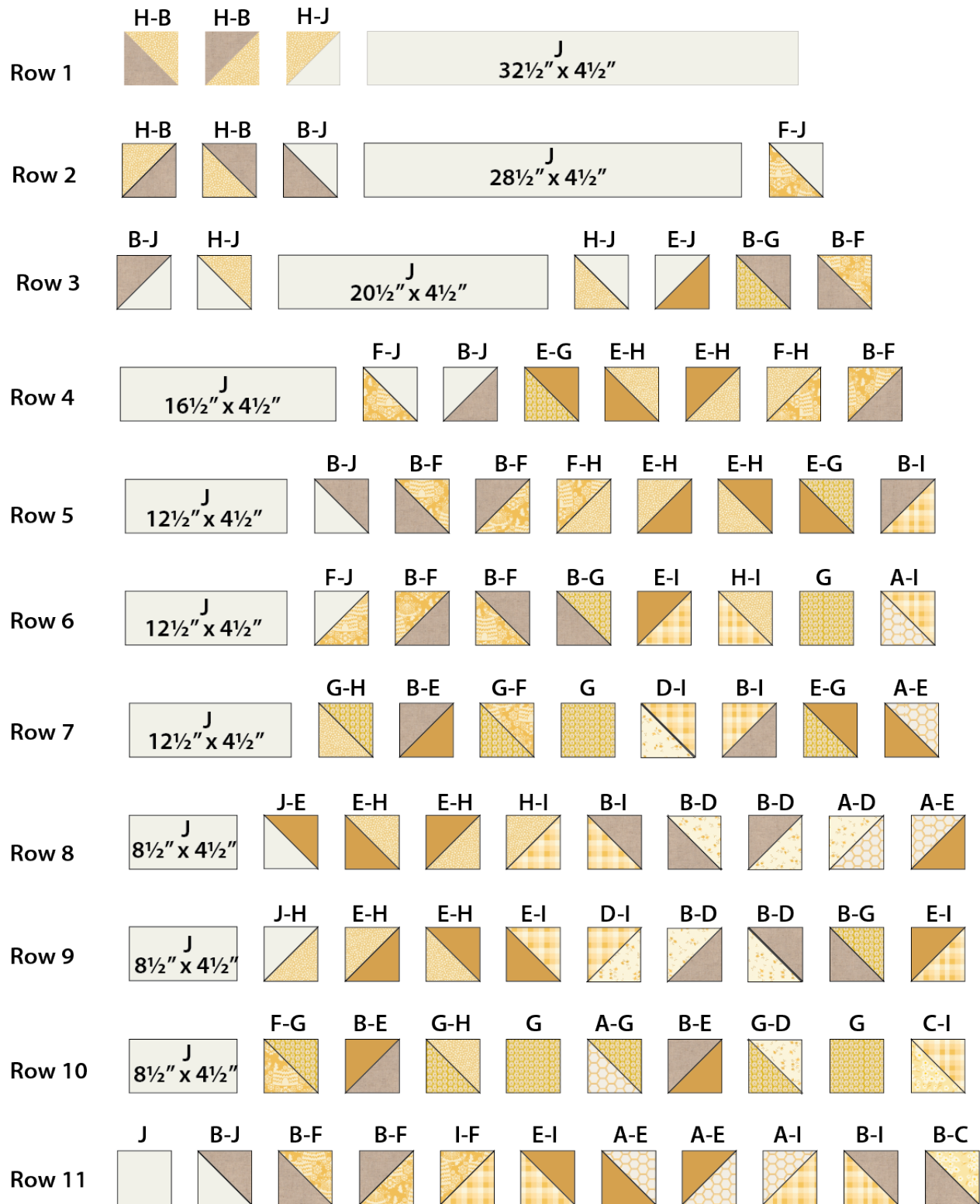


DIAGRAM 4

- Sew all eleven (11) rows.

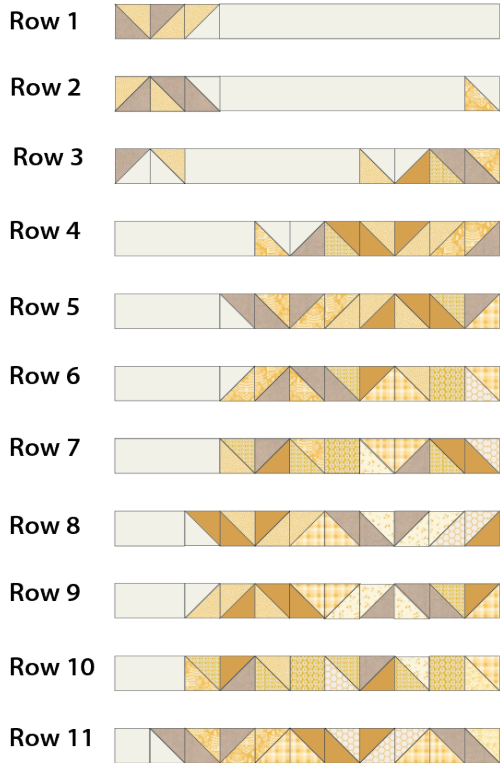


DIAGRAM 5

- Make a total of four (4) blocks.

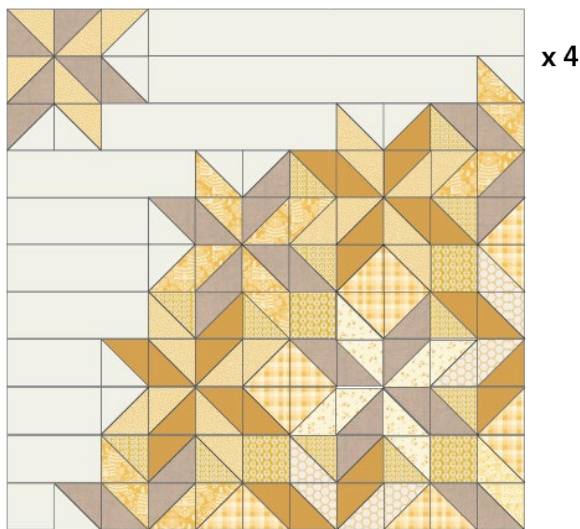


DIAGRAM 6

QUILT TOP

- Join all four (4) blocks into two rows of two blocks each. See diagram 7 for reference and make sure of the position and direction of each block.
- Sew rows.

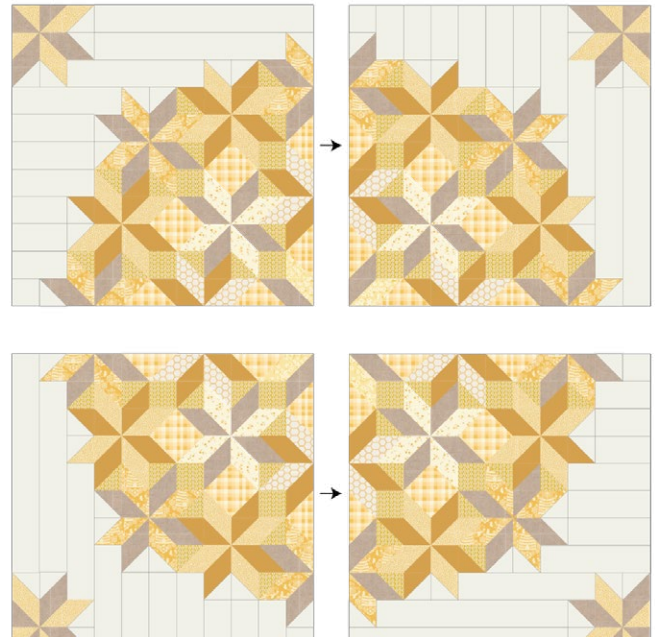


DIAGRAM 7

- Quilt as desired.

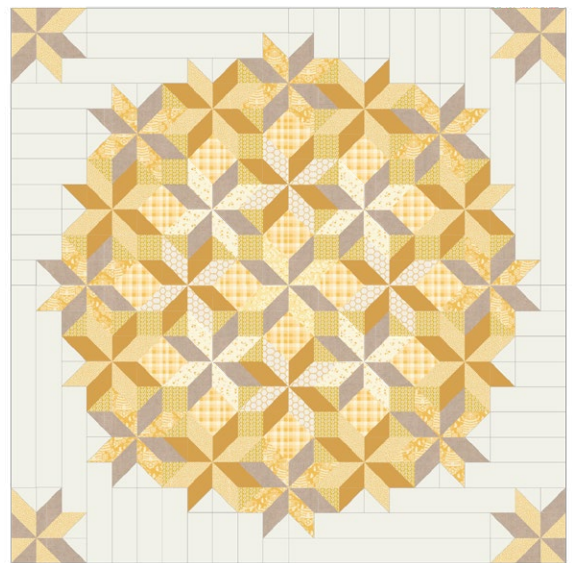


DIAGRAM 8

QUILT ASSEMBLY

Sew rights sides together.

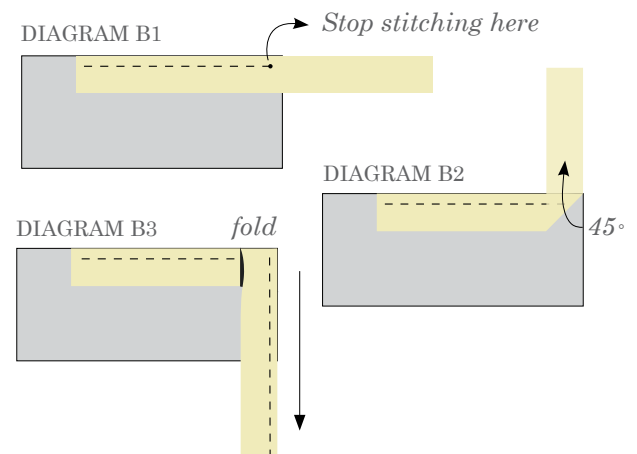
- Place BACKING FABRIC on a large surface wrong side up. Stretch it with masking tape against that surface.
- Place BATTING on top of backing fabric.
- Place TOP on top of the batting with right side facing up. Smooth away wrinkles using your hands.
- Pin all layers together and baste with basting thread, using long stitches. You can also use safety pins to join the layers.
- Machine or hand quilt starting at the center and working towards the corners. Remember that quilting motifs are a matter of personal preference. Have fun choosing yours!
- After you finished, trim excess of any fabric or batting, squaring the quilt to proceed to bind it.

BINDING

Sew rights sides together.

- Cut enough strips $1\frac{1}{2}$ " wide by the width of the fabric **A** to make a final strip 362 " long. Start sewing the binding strip in the middle of one of the sides of the quilt, placing the strip right side down and leaving an approximated 5 " tail. Sew with $\frac{1}{4}$ " seam allowance (using straight stitch), aligning the strip's raw edge with the quilt top's raw edge.
- Stop stitching $\frac{1}{4}$ " before the edge of the quilt (DIAGRAM B 1). Clip the threads. Remove the quilt from under the machine presser foot. Fold the strip in a motion of 45° and upward, pressing with your fingers (DIAGRAM B2). Hold this fold with your finger, bring the strip down in line with the next edge, making a horizontal fold that aligns with the top edge of the quilt (DIAGRAM B3). Start sewing at $\frac{1}{4}$ " of the border, stitching all the layers. Do the same in the four corners of the quilt.

- Stop stitching before you reach the last 5 or 6 inches. Cut the threads and remove the quilt from under the machine presser foot. Lay the loose ends of the binding flat along the quilt edge, folding the ends back on themselves where they meet. Press them together to form a crease. Using this crease as the stitching line, sew the two open ends of the binding with right sides together (you can help yourself marking with a pencil if the crease is difficult to see).
- Trim seam to $\frac{1}{4}$ " and press open. Complete the sewing. Turn binding to back of the quilt, turn raw edge inside and stitch by hand using blind stitch.



XXXXXXXXXXXXXXXXXXXXXXXXXXXXXXXXXXXX

*Congratulations
& enjoy*

XXXXXXXXXXXXXXXXXXXXXXXXXXXXXXXXXXXX



artgalleryfabrics.com

NOTE: While all possible care has been taken to ensure the accuracy of this pattern, We are not responsible for printing errors or the way in which individual work varies.

Please read instructions carefully before starting the construction of this quilt. If desired, wash and iron your fabrics before starting to cut.

© 2022 Courtesy of Art Gallery Quilts LLC. All Rights Reserved.