



# Swanflower



FREE PATTERN



*Swanflower* with a small floral icon  
*Bonnie Christine*

QUILT DESIGNED BY  
BONNINE CHRISTINE



FABRICS DESIGNED BY BONNIE CHRISTINE

HERB GARLAND



**HOL-36650**  
SWANLINGS BEVY NIGHTFALL



**HOL-36651**  
MEADOW DREAMS PURE



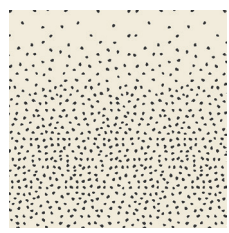
**HOL-36652**  
FEATHERED FELLOW BLUSH



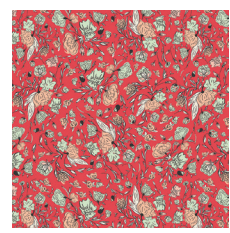
**HOL-36653**  
WINNOW FROCK DHALIA



**HOL-36654**  
SWEETLY SINGS GOLDEN



**HOL-36655**  
NESTED GATHERING



**HOL-36656**  
BLOSSOM DRIFT ROSEATE



**HOL-36657**  
VILLAGE TUNDRA SPROUT



**HOL-36658**  
GARDEN GROUNDS BUDDING

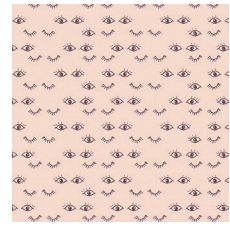


**HOL-36659**  
DABBLING SWAN PLUM

PINK LEAVES



**HOL-46650**  
SWANLINGS BEVY PEACH



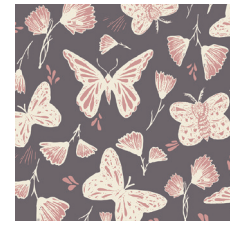
**HOL-46651**  
MEADOW DREAMS LACE



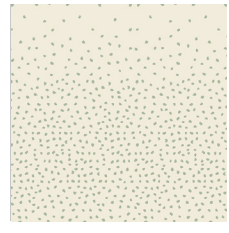
**HOL-46652**  
FEATHERED FELLOW LUSH



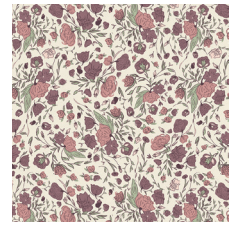
**HOL-46653**  
WINNOW FROCK



**HOL-46654**  
SWEETLY SINGS GLIMMER



**HOL-46655**  
NESTED ROOTS



**HOL-46656**  
BLOSSOM DRIFT FLUSHED



**HOL-46657**  
VILLAGE TUNDRA TUBERS



**HOL-46658**  
GARDEN GROUNDS DOLLOP



**HOL-46659**  
DABBLING SWAN SAGE





FINISHED SIZE | 63" x 72"

## FABRIC REQUIREMENTS

Fabric <b>A</b>	HOL-36656	$\frac{3}{8}$ yd.
Fabric <b>B</b>	HOL-36659	$\frac{5}{8}$ yd.
Fabric <b>C</b>	HOL-46650	$\frac{5}{8}$ yd.
Fabric <b>D</b>	HOL-46658	$\frac{5}{8}$ yd.
Fabric <b>E</b>	HOL-46652	$\frac{5}{8}$ yd.
Fabric <b>F</b>	HOL-36653	$\frac{5}{8}$ yd.
Fabric <b>G</b>	HOL-46657	$\frac{3}{8}$ yd.
Fabric <b>H</b>	HOL-46655	$2\frac{7}{8}$ yd.

### BACKING FABRIC

HOL-46654- 4  $\frac{1}{2}$  yds. (suggested)

### BINDING FABRIC

HOL-46656-  $\frac{1}{2}$  yd.

## CUTTING DIRECTIONS

$\frac{1}{4}$ " seam allowances are included.  
WOF means width of fabric.

Four (4) 10" squares from Fabrics **A** and **G**

Five (5) 10" squares from Fabric **F**

Six (6) 10" squares from Fabrics **B, C, D** and **E**

Four (4) 10" squares from Fabric **A** and **G**

Thirty-seven (37) 10" squares from Fabric **H**

**From binding fabric, cut seven (7) 2" x WOF strips.**

## CONSTRUCTION

Sew all rights sides together with  $\frac{1}{4}$ " seam allowance.

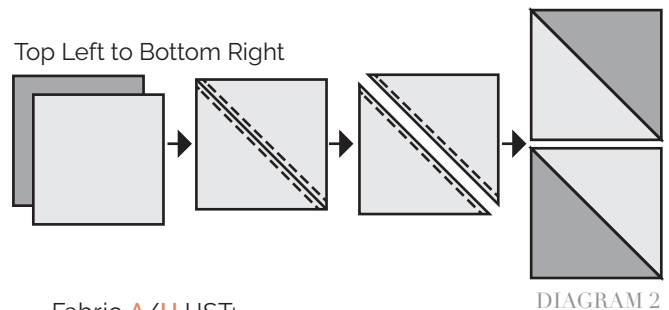
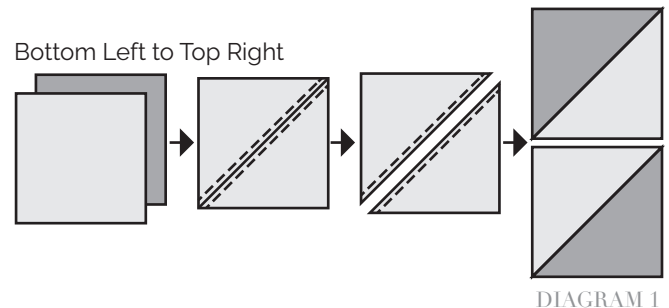
- You will be sewing large half square triangles (HST) from all the squares to assemble the quilt top.



- The majority of the fabrics used in this quilt have a definite direction. Since the blocks are so large we want to preserve this direction so we will be cutting our HST carefully and double-checking that the fabric is in the correct orientation.

### To make the HST:

- Pair your two fabrics, right sides together. Mark the diagonal, then mark your sewing lines  $\frac{1}{4}$ " away from the diagonal. Sew on lines, cut on the diagonal and press both open. Square the HST with a ruler, aligning to the diagonal seam and trimming to 9  $\frac{1}{2}$ " squares.
- For Directional Cuts:** You will have to cut the HST in two different directions to maintain the correct direction in the prints. Diagram 1 & Diagram 2 show you the two ways you will make HST.
- Place your directional print facing up, with the print in the correct orientation, then place fabric H on top, right sides together. **Before sewing double check they are placed correctly by folding back fabric H at the diagonal to simulate a finished HST.**



### Fabric **A/H** HST:

- This combination is non directional so you can make all your marks & cuts on the same diagonal. Pair 4 fabric **A** squares with 4 fabric **H** squares. Make HST as described above. Makes 8 HST.

### Fabric **B/H** HST (Directional):

- This combination is directional. Place 6 fabric H squares on top of 6 fabric B squares, checking placement according to instructions.

**Fabric B/H HST, cont.:**

- Sew 4 pairs in the **Bottom Left to Top Right** direction. Makes 8 HST. Set aside the 4 HST with fabric **B** top left for another project.
- Sew 2 pairs in the **Top Left to Bottom Right** direction. Makes 4 HST.

**Fabric C/H HST (Directional):**

- Sew 2 pairs in the **Bottom Left to Top Right** direction. Makes 4 HST. Set aside 1 HST with fabric **C** bottom right for another project.
- Sew 4 pairs in the **Top Left to Bottom Right** direction. Makes 8 HST. Set aside 3 HST with fabric **C** top right for another project.

**Fabric D/H HST (Directional):**

- Sew 4 pairs in the **Bottom Left to Top Right** direction. Makes 8 HST. Set aside 3 HST with fabric **D** bottom right for another project.
- Sew 2 pairs in the **Top Left to Bottom Right** direction. Makes 4 HST. Set aside 1 HST with fabric **D** top right for another project.

**Fabric E/H HST (Directional):**

- Sew 4 pairs in the **Bottom Left to Top Right** direction. Makes 8 HST. Set aside 4 HST with fabric **E** bottom right for another project.
- Sew 2 pairs in the **Top Left to Bottom Right** direction. Makes 4 HST.

**Fabric F/H HST (Directional):**

- Sew 2 pairs in the **Bottom Left to Top Right** direction. Makes 4 HST.
- Sew 3 pairs in the **Top Left to Bottom Right** direction. Makes 6 HST. Set aside 2 HST with fabric **F** top right for another project.

**Fabric G/H HST (Non-Directional):**

- Sew 4 pairs in either direction to make 8 HST.

Before assembling the quilt top, make sure that all your HST are squared and trimmed to  $9\frac{1}{2}$ " squares. Square and trim by aligning the  $45^\circ$  angle on a clear ruler to the sewn seam of the HST and trimming the sides to make them perfect squares measuring  $9\frac{1}{2}$ ".

**ASSEMBLING THE QUILT TOP**

*Sew all rights sides together with  $\frac{1}{4}$ " seam allowance. Press open.*

- Refer to the cover quilt illustration and the diagram below to assemble the quilt top. Assemble rows first, then sew rows together to complete the quilt top. Press top.

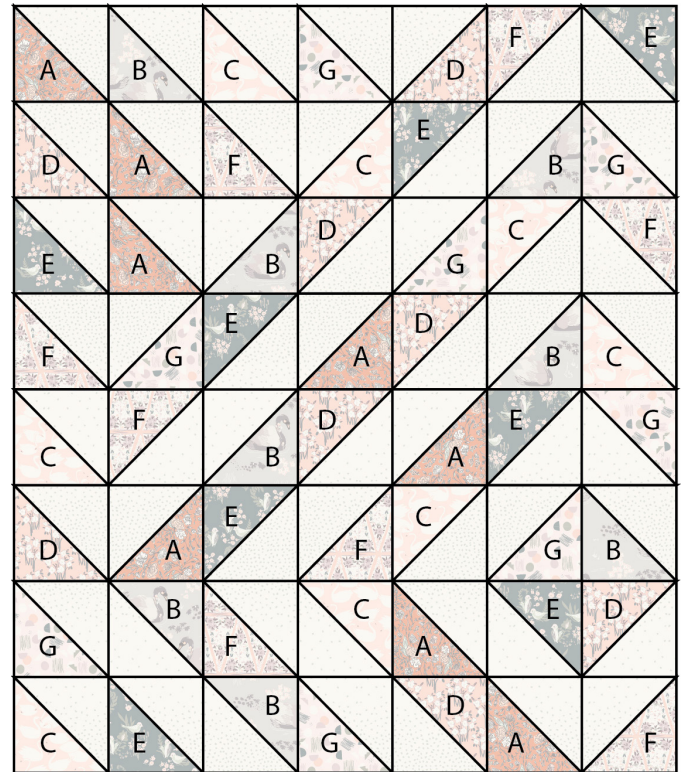


DIAGRAM 3

**QUILT ASSEMBLY**

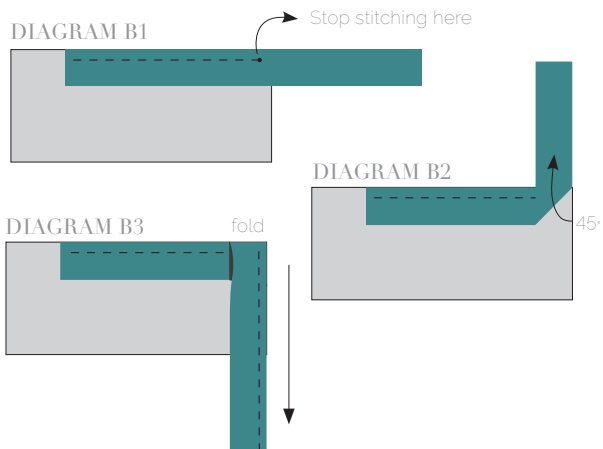
- Cut Backing Fabric into 2 equal rectangles, each  $2\frac{1}{4}$  yd. x WOF. Trim off selvedge edges and sew them together along this lengthwise edge, right sides together. Press open the seam.
- Place BACKING FABRIC on a large surface wrong side up. Stretch it with masking tape against that surface.
- Place BATTING on top of backing fabric.
- Place TOP on top of the batting with right side facing up. Smooth away wrinkles using your hands.
- Pin all layers together and baste with basting thread, using long stitches. You can also use safety pins to join the layers.

- Machine or hand quilt starting at the center and working towards the corners. Remember that quilting motifs are a matter of personal preference. Have fun choosing yours!
- After you finished, trim excess of any fabric or batting, squaring the quilt to proceed to bind it.

## BINDING

*Sew rights sides together.*

- Sew your 7 WOF binding strips together to make a final strip 285" long. Start sewing the binding strip in the middle of one of the sides of the quilt, placing the strip right side down and leaving an approximated 5" tail. Sew with  $\frac{1}{4}$ " seam allowance (using straight stitch), aligning the strip's raw edge with the quilt top's raw edge.
- Stop stitching  $\frac{1}{4}$ " before the edge of the quilt (**DIAGRAM B1**). Clip the threads. Remove the quilt from under the machine presser foot. Fold the strip in a motion of  $45^\circ$  and upward, pressing with your fingers (**DIAGRAM B2**). Hold this fold with your finger, bring the strip down in line with the next edge, making a horizontal fold that aligns with the top edge of the quilt (**DIAGRAM B3**). Start sewing at  $\frac{1}{4}$ " of the border, stitching all the layers. Do the same in the four corners of the quilt.



- Stop stitching before you reach the last 5 or 6 inches. Cut the threads and remove the quilt from under the machine presser foot. Lay the loose ends of the binding flat along the quilt edge, folding the ends back on themselves where they meet. Press them together to form a crease. Using this crease as the stitching line, sew the two open ends of the binding with right sides together (you can help yourself marking with a pencil if the crease is difficult to see).

- Trim seam to  $\frac{1}{4}$ " and press open. Complete the sewing. Turn binding to back of the quilt, turn raw edge inside and stitch by hand using blind stitch.
- Congrats! You've finished your beautiful Hello, Ollie Quilt!

Hmm... what to do with those 18 leftover HST? The possibilities are endless! How about:

- Making matching pillow case covers, and pillow shams for the bed.
- Sewing two together and surrounding with a patchy border to make placemats.
- Making a table runner with them.
- Incorporating them into the quilt back.
- Cutting them apart to make Mountain Blocks and combining those together to make any of the above items!
- Sewing them together to make quarter square triangles and using those to make any of the above items.



[artgalleryfabrics.com](http://artgalleryfabrics.com)

**NOTE:** While all possible care has been taken to ensure the accuracy of this pattern, We are not responsible for printing errors or the way in which individual work varies. Please read instructions carefully before starting the construction of this quilt. If desired, wash and iron your fabrics before starting to cut.

© 2016 Courtesy of Art Gallery Quilts LLC. All Rights Reserved.