

# TRUTHS



FREE PATTERN



# TRUTHS

Bonnie Christine

QUILT DESIGNED BY BONNIE CHRISTINE AND MAXIE MAKES



maxie makes



FABRICS DESIGNED BY BONNIE CHRISTINE

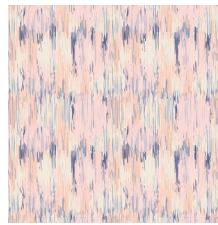
HONEST WHISPER



WOT-21400  
AQUARELLE STUDY WASH



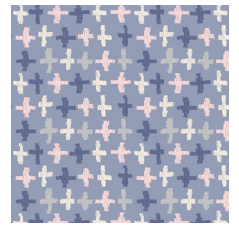
WOT-21401  
SPLENDID OATH RAIN



WOT-21402  
DAYDREAM SIGH



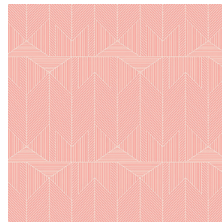
WOT-21403  
FLOWER GLORY MORNING



WOT-21404  
JOY CROSSROADS AZURE



WOT-21405  
SWEET BUBBLES MINT



WOT-21406  
SUBTLE JOURNEY EAST



WOT-21407  
BLOOMING BROOK MOON



WOT-21408  
WORDS TO LIVE BY BOUNTY



WOT-21409  
GARDEN WALK THISTLE

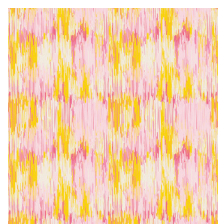
HONEYED WONDERS



WOT-31400  
AQUARELLE STUDY TINT



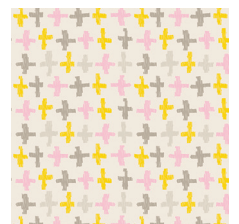
WOT-31401  
SPLENDID OATH INK



WOT-31402  
DAYDREAM HUM



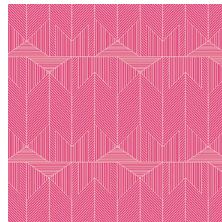
WOT-31403  
FLOWER GLORY EVENING



WOT-31404  
JOY CROSSROADS PASTEL



WOT-31405  
SWEET BUBBLES SUGAR



WOT-31406  
SUBTLE JOURNEY WEST



WOT-31407  
BLOOMING BROOK SOL



WOT-31408  
WORDS TO LIVE BY WHISPER



WOT-31409  
GARDEN WALK SHINE



# TRUTHS

FINISHED SIZE | 45" x 66"

## FABRIC REQUIREMENTS

Fabric A	WOT-21400	1/3 yd.
Fabric B	WOT-21401	1 7/8 yd.
Fabric C	WOT-21402	1/3 yd.
Fabric D	WOT-21403	5/8 yd.
Fabric E	WOT-21404	1/3 yd.
Fabric F	WOT-21405	1/3 yd.
Fabric G	WOT-21406	1/3 yd.
Fabric H	WOT-21407	1/3 yd.
Fabric I	WOT-21408	3/4 yd.

### BACKING FABRIC

WOT-21400- 3 1/4 yds. (suggested)

### BINDING FABRIC

WOT-21401- (fabric B) included

Enough yardage is given for bias binding. You will need approximately 270" binding.

Backing yardage allows for a horizontal seam across the 45" width.

## CUTTING DIRECTIONS

1/4" seam allowances are included.  
WOF means width of fabric.

Thirty (30) 9" squares are required for the pieced blocks. The yardage given will allow you to cut four (4) from each 1/3 yard cut and six (6) from the 5/8 yard cut.

Four (4) from Fabric **A, C, E, F, G, H**

Six (6) from Fabric **D**

Six (6) 8" squares from Fabric **I**, centering the banner in each square.

Nine (9) strips, 3 1/2" wide x WOF Fabric **B**, for sash-ing strips. The remainder fabric is for binding.

## CONSTRUCTION

Sew all rights sides together with 1/4" seam allowance.

- Randomly pair the thirty (30) squares together to make fifteen (15) pairs.
- On the wrong side of one square from each pair, mark diagonal lines in both directions.
- Place each marked square right sides together with its mate.
- Stitch 1/4" from one of the drawn lines, on both sides of the line. Cut on the marked line that you did not stitch on either side.
- Next, cut on the marked line between the stitching line. This cutting will yield four pieced triangle units.

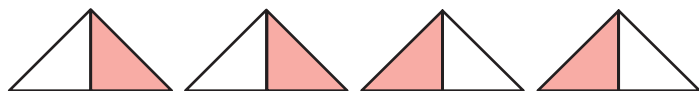


DIAGRAM 1

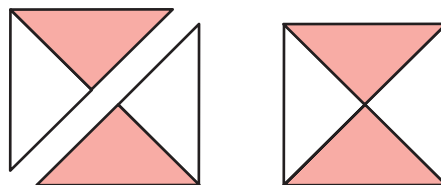


DIAGRAM 2

- After sewing all fifteen (15) pairs, mix and match the units back together, forming squares, in any desired combination.
- It will be helpful to press the seam allowances in opposite directions before sewing the triangles together.
- Trim each Quarter Square Triangle Block to 8".
- From WOT-21408, cut six (6) 8" squares, centering the banner in each square.
- Referring to the diagram, arrange the blocks into six (6) rows, with five (5) quarter square triangle blocks and one banner square block in each row.

## QUILT ASSEMBLY

### Sashing:

- Cut nine (9) strips, 3 ½' wide x WOF. To determine the length of the sashing strips, measure each pieced row. Average the measurements and cut every sashing strip to this measurement.
- Piece as necessary to achieve length for sashing strips.

## ASSEMBLING THE QUILT TOP

*Sew all rights sides together with ¼" seam allowance. Press open.*

- Lay out the sashing strips and rows as shown. Fold the first sashing strip in half and mark the center with a pin.
- Pin the ends of the sashing strip to the bottom of the first pieced row, right sides together.
- Match the centers and stitch, easing to fit, if necessary.
- Continue to attach each subsequent sashing and block row in the same manner, as shown in the Diagram 3.
- Last, sew a sashing strip to the bottom and top of the quilt (not shown in Diagram 3; see cover photo).

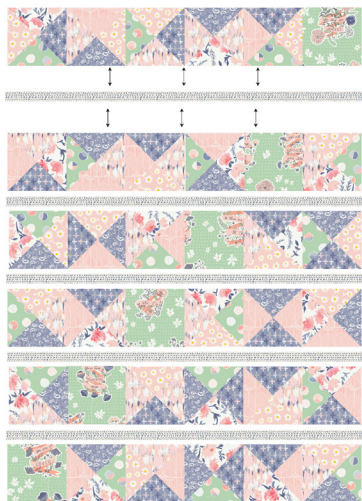


DIAGRAM 3

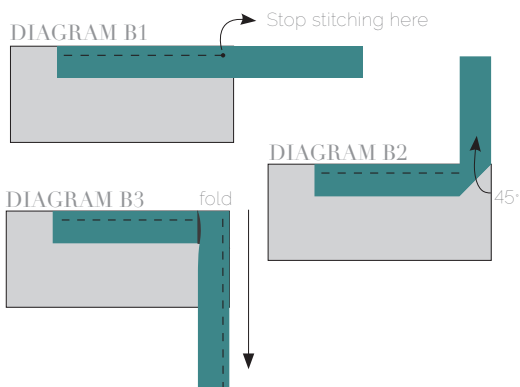
- Place BACKING FABRIC on a large surface wrong side up. Stretch it with masking tape against that surface.
- Place BATTING on top of backing fabric.
- Place TOP on top of the batting with right side facing up. Smooth away wrinkles using your hands.
- Pin all layers together and baste with basting thread, using long stitches. You can also use safety pins to join the layers.
- Machine or hand quilt starting at the center and working towards the corners. Remember that quilting motifs are a matter of personal preference. Have fun choosing yours!
- After you finished, trim excess of any fabric or batting, squaring the quilt to proceed to bind it.

## BINDING

*Sew rights sides together.*

- Cut enough strips 1½' wide by the width of the fabric **B** to make a final strip 250' long. Start sewing the binding strip in the middle of one of the sides of the quilt, placing the strip right side down and leaving an approximated 5' tail. Sew with ¼' seam allowance (using straight stitch), aligning the strip's raw edge with the quilt top's raw edge.
- Stop stitching ¼' before the edge of the quilt (**DIAGRAM B 1**). Clip the threads. Remove the quilt from under the machine presser foot. Fold the strip in a motion of 45° and upward, pressing with your fingers (**DIAGRAM B2**). Hold this fold with your finger, bring the strip down in line with the next edge, making a horizontal fold that aligns with the top edge of the quilt (**DIAGRAM B3**). Start sewing at ¼' of the border, stitching all the layers. Do the same in the four corners of the quilt.

- Stop stitching before you reach the last 5 or 6 inches. Cut the threads and remove the quilt from under the machine presser foot. Lay the loose ends of the binding flat along the quilt edge, folding the ends back on themselves where they meet. Press them together to form a crease. Using this crease as the stitching line, sew the two open ends of the binding with right sides together (you can help yourself marking with a pencil if the crease is difficult to see).
- Trim seam to  $\frac{1}{4}$ " and press open. Complete the sewing. Turn binding to back of the quilt, turn raw edge inside and stitch by hand using blind stitch.



[artgalleryfabrics.com](http://artgalleryfabrics.com)

*NOTE: While all possible care has been taken to ensure the accuracy of this pattern, We are not responsible for printing errors or the way in which individual work varies. Please read instructions carefully before starting the construction of this quilt. If desired, wash and iron your fabrics before starting to cut.*

© 2017 Courtesy of Art Gallery Quilts LLC. All Rights Reserved.