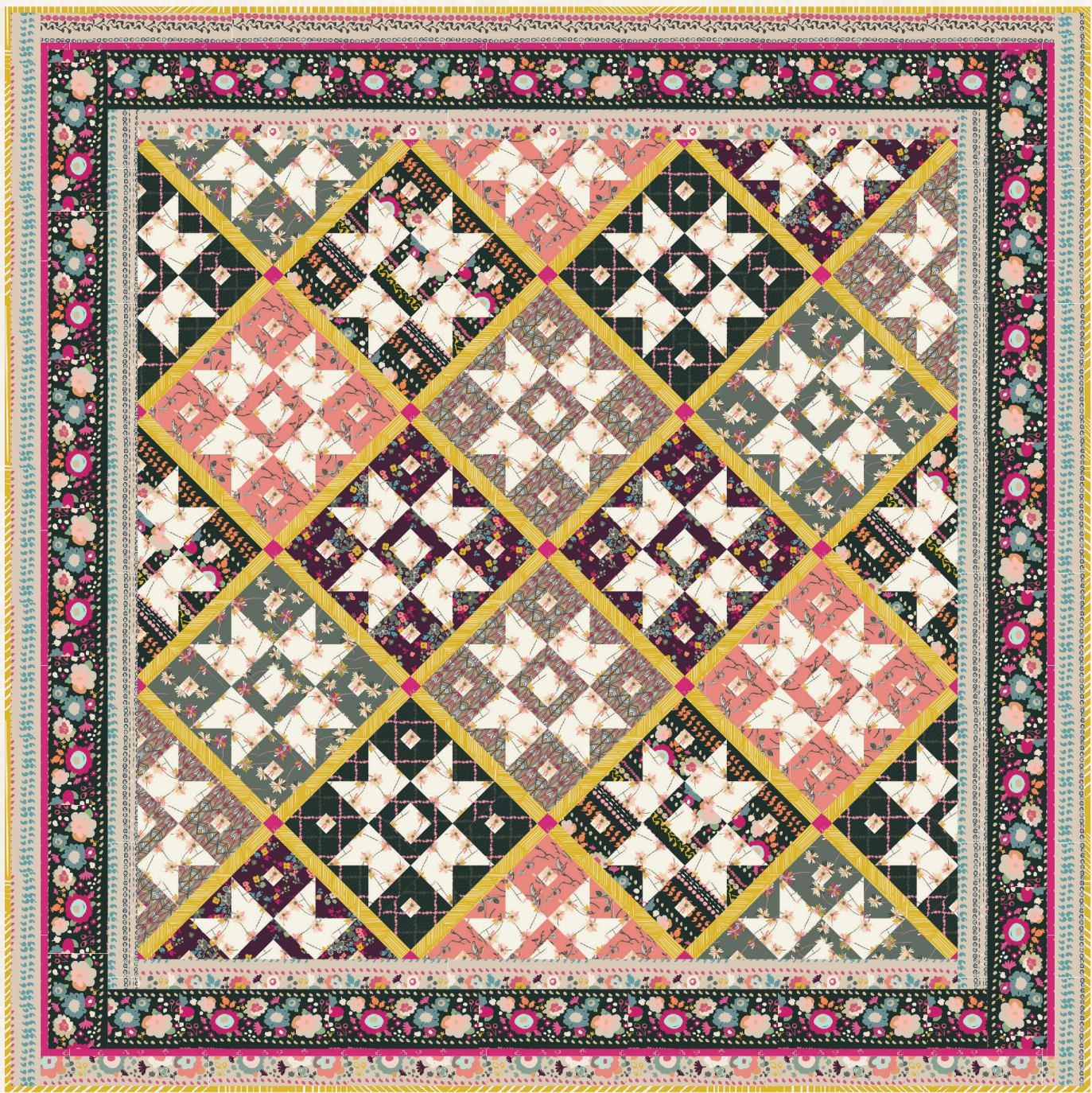


X
X
X
X
X
X
X
X
X
X
X
X
X
X
X

wild FLOWERS



FREE PATTERN

X X





wild FLOWERS Pat Bravo

QUILT DESIGNED BY PAT BRAVO



COLOR OPTION

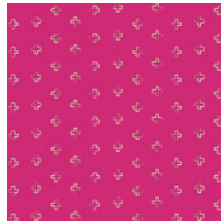
INDIE Bohème

FABRICS DESIGNED BY PAT BRAVO

ROMANTIC BOUDOIR



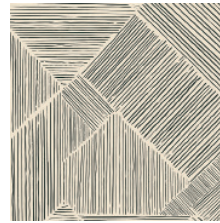
IBH-64200
GITAN PARADIS PEARL



IBH-64201
BRIEF MEMENTOS PINK



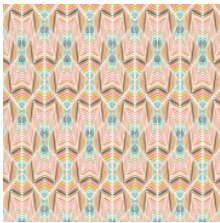
IBH-64202
BOHO QUEST NIGHT



IBH-64203
TROUVILLE ROUTES SAND



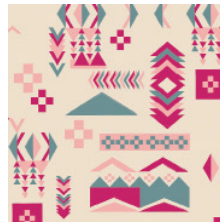
IBH-64204
VIE DE BOHÈME SUNRISE



IBH-64205
ETERNAL SERENITY ROSE



IBH-64206
BLOOMING SOUL LAUREL



IBH-64207
WOODBLOCK SPIRIT CRISP



IBH-64208
APATITE CRYSTAL



IBH-64209
BOHEMIAN PATCHWORK

ANTIQUÉ DRESSER



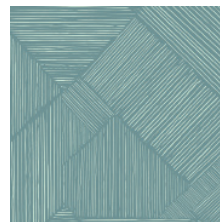
IBH-74200
BLOMMA GARDEN GOLDEN



IBH-74201
BRIEF MEMENTOS LINEN



IBH-74202
BOHO QUEST DAY



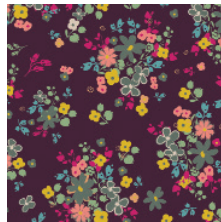
IBH-74203
TROUVILLE ROUTES OCEAN



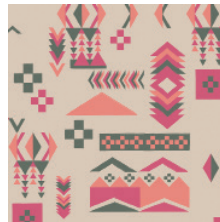
IBH-74204
VIE DE BOHÈME SUNSET



IBH-74205
ETERNAL SERENITY CORAL



IBH-74206
BLOOMING SOUL PLUM



IBH-74207
WOODBLOCK SPIRIT WARM



IBH-74210
TROUVILLE ROUTES SUN



IBH-74211
FOLK PLEATS



wild FLOWERS

FINISHED SIZE | 72" x 72"

FABRIC REQUIREMENTS

Fabric A	IBH-64200	1½ yd.
Fabric B	IBH-64201	¾ yd.
Fabric C	IBH-64202	2¾ yd.
Fabric D	IBH-64208	⅝ yd.
Fabric E	IBH-74200	⅝ yd.
Fabric F	IBH-74202	1 yd.
Fabric G	IBH-74204	⅝ yd.
Fabric H	IBH-74205	⅝ yd.
Fabric I	IBH-74206	⅝ yd.
Fabric J	IBH-74210	1 yd.

BACKING FABRIC

IBH-74210 4 yds. *(Suggested)*

BINDING FABRIC

IBH-74210 (Fabric J) *(included)*

CUTTING DIRECTIONS

*¼" seam allowances are included.
WOF means width of fabric.*

Fabric A

Ninety-six (96) 3" squares
Ninety-six (96) 2 ½" x 4 ½" strips
Six (6) 2 ½" x 20" strips
Six (6) 1 ½" x 24"

Fabric B

Two (2) 68 ½" x 1" strips
Two (2) 67 ½" x 1" strips
One (1) WOF x 1 ½" strip
One (1) 3" x 1 ½" rectangle
One (1) 1 ½" square

Fabric C

Two (2) 59 ½" x 4 ½" strips
Two (2) 67 ½" x 4 ½" strips
Thirty-two (32) 4 ½" x 2" strips

Fabric C

Two (2) 24" x 2" strips
Eight (8) 4 ½" x 1 ½" strips
Two (2) 20" x 1 1/2" strips
Sixteen (16) 3" squares

Fabric D, E, G, H, I

Thirty-two (32) 4 ½" x 2" strips
Two (2) 24" x 2" strips
Eight (8) 4 ½" x 1 ½" strips
Two (2) 20" x 1 ½" strips
Sixteen (16) 3" squares

Fabric F

Two (2) 68 ½" x 2 ½" strips
Two (2) 72 ½" x 2 ½" strips
Two (2) 55 ½" x 2 ½" strips
Two (2) 59 ½" x 2 ½" strips

Fabric J

Two (2) WOF x 12 ½" strips
Two (2) 12 ½" x 3" strips
Seven (7) WOF x 1 ½"

CONSTRUCTION

Sew all rights sides together with ¼" seam allowance.

- Start with the construction of the HST
- To accomplish the HST construction take the 3" squares from fabrics **A, C, D, E, G, H** and **I**.
- Using a water-soluble marker, mark a diagonal line across the wrong side of all **A** squares.

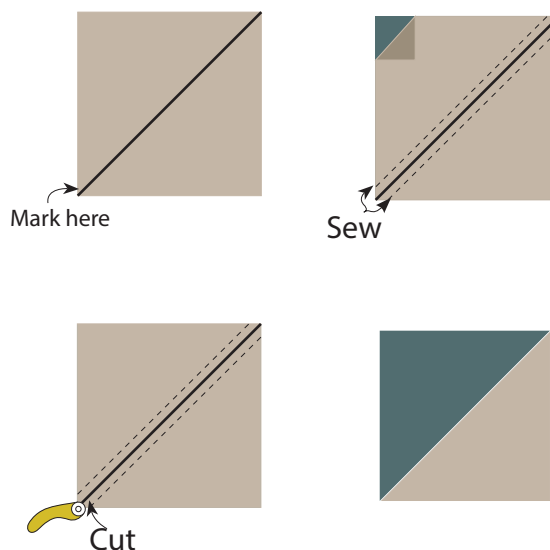
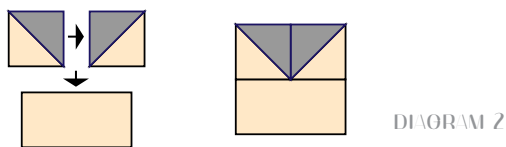


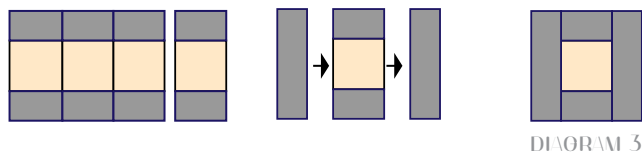
DIAGRAM 1

- Pair one **A** square right sides together with each of the squares from the other fabrics.
- Sew $\frac{1}{4}$ " on both sides of the marked line.
- Cut piece in half along the drawn line. Press seams open and trim half-square triangles into a $2\frac{1}{2}$ " square.
- You will end up having 32 HST for each fabric combination. (see diagram 1)
- Sew together two HST (in the same fabric combinations) as shown in diagram 2.
- Sew the HST to the Fabric **A** $2\frac{1}{2}$ " x $4\frac{1}{2}$ " strips as shown. These will be used in the main 9-Patch blocks.

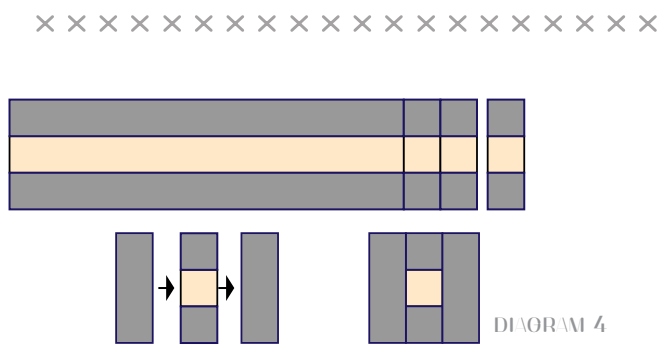


Cross-Cutting Strip Sets

- Gather your six $2\frac{1}{2}$ " x 20 " strips in Fabric **A** and your $1\frac{1}{2}$ " x 20 " strips from fabrics **C, D, E, G, H** and **I**.
- Sew your $2\frac{1}{2}$ " fabric **A** strips in between the two $1\frac{1}{2}$ " fabric **C** strips. Press and cross-cut every $2\frac{1}{2}$ " to make four pieces.
- Sew the $1\frac{1}{2}$ " x $4\frac{1}{2}$ " fabric **C** strips to either side, RST, as shown in diagram 3. This will be the center block in the 9-Patch blocks.
- Repeat for fabrics **D, E, G, H** and **I**.

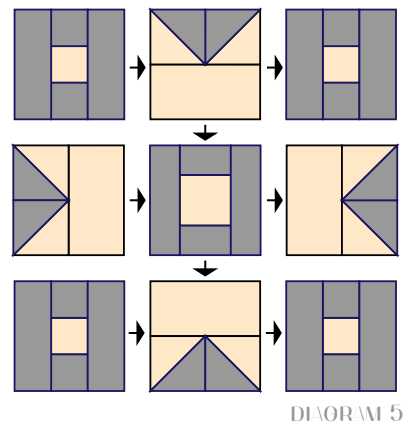


- Gather your six $1\frac{1}{2}$ " x 24 " strips in Fabric **A** and your 2 " x 24 " strips from fabrics **C, D, E, G, H** and **I**.
- Sew your $1\frac{1}{2}$ " fabric **A** strips in between the two 2 " fabric **C** strips. Press and cross-cut every $1\frac{1}{2}$ " to make sixteen pieces.
- Sew the 2 " x $4\frac{1}{2}$ " fabric **C** strips to either side, RST, as shown in diagram 4. These will be the corner blocks in the 9-Patch blocks.
- Repeat for fabrics **D, E, G, H** and **I**.



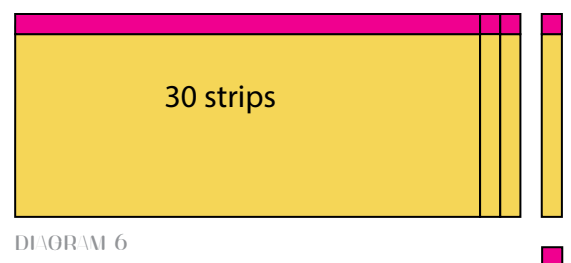
Assembling 9-Patch Blocks

- Block **A**: gather all the Fabric I and Fabric A blocks and assemble according to diagram 5. Make 4.
- Block **B**: Repeat for fabric H and Fabric A blocks.
- Block **C**: Repeat for fabric G and Fabric A blocks.
- Block **D**: Repeat for fabric E and Fabric A blocks.
- Block **E**: Repeat for fabric D and Fabric A blocks.
- Block **F**: Repeat for fabric C and Fabric A blocks.



Sashing

- Cut thirty (30) $1\frac{1}{2}$ " x $12\frac{1}{2}$ " strips from one of the WOF x $12\frac{1}{2}$ " Fabric **J** rectangles and from one of the 3 " x $12\frac{1}{2}$ " rectangles.
- Take the WOF x $12\frac{1}{2}$ " x $12\frac{1}{2}$ " fabric **J** piece and sew, RST, to the WOF x $1\frac{1}{2}$ " strip from fabric **B**. Sew the 3 " x $1\frac{1}{2}$ " Fabric **B** strip to the 3 " x $12\frac{1}{2}$ " fabric **J** strip. Press and cross-cut every $1\frac{1}{2}$ " to make thirty strips.



- Sew the Fabric **B** $1\frac{1}{2}$ ' square to the end of one of the Fabric **J/B** strips. (Diagram 6)
- Arrange the blocks and sashing strips according to diagram 7.
- First sew the blocks and strips into rows, then sew the Fabric **J/B** strips to each other into rows.
- Sew all rows together, making sure to align the sashing strips and blocks as shown in the cover illustration and below.

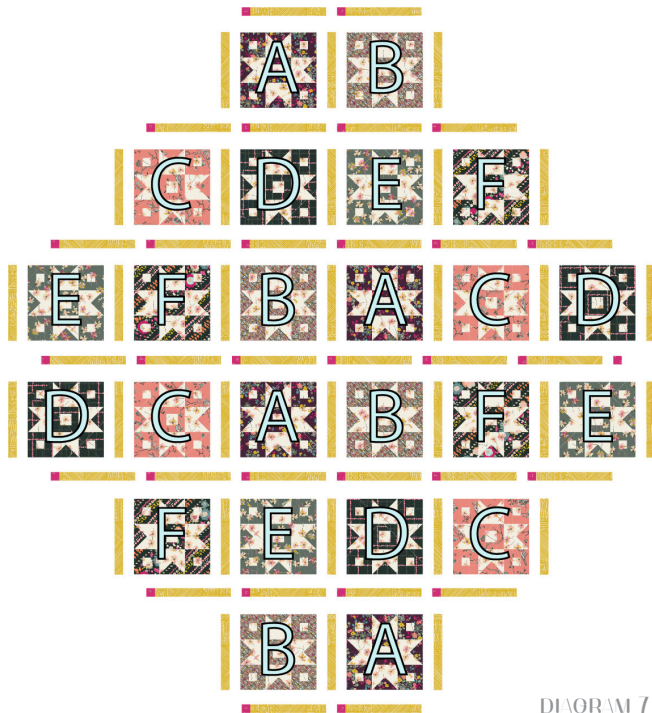


DIAGRAM 7

- Press seams, rotate 45° and square off. Cut to $55\frac{1}{2}$ ' x $55\frac{1}{2}$ ' square. See diagram below.

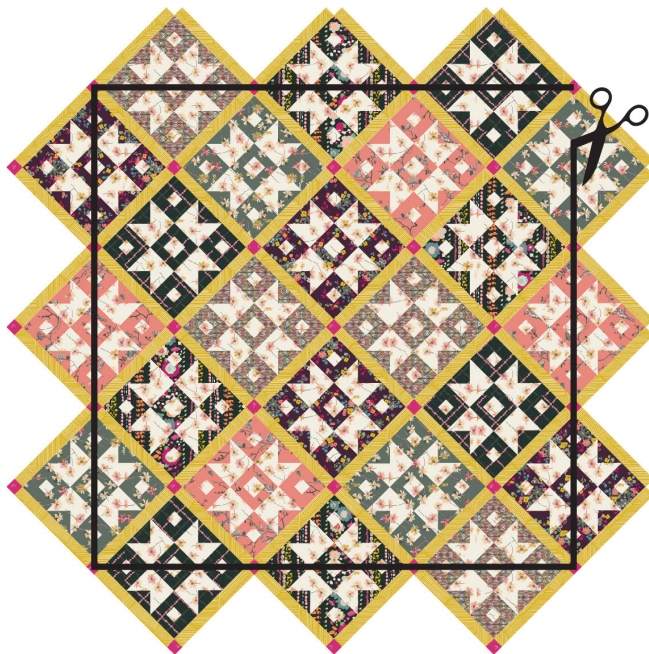


DIAGRAM 8

ASSEMBLE QUILT TOP

- Sew your $55\frac{1}{2}$ ' long Fabric **F** strips to the top and bottom of the square. Then sew the $59\frac{1}{2}$ ' Fabric **F** strips to the sides.
- Next, sew your $59\frac{1}{2}$ ' long Fabric **C** strips to the top and bottom of the square. Then sew the $67\frac{1}{2}$ ' long Fabric **C** strips to either side.
- Now, sew your $67\frac{1}{2}$ ' long Fabric **B** strips to the top and bottom of the square. Then sew the $68\frac{1}{2}$ ' long Fabric **B** strips to either side.
- Finally, sew your $68\frac{1}{2}$ ' long Fabric **J** strips to the top and bottom of the square. Finish by sewing the $72\frac{1}{2}$ ' long Fabric **J** strips to either side of the quilt top and Voila! We're done with the quilt top!



DIAGRAM 9

QUILT ASSEMBLY

Sew rights sides together.

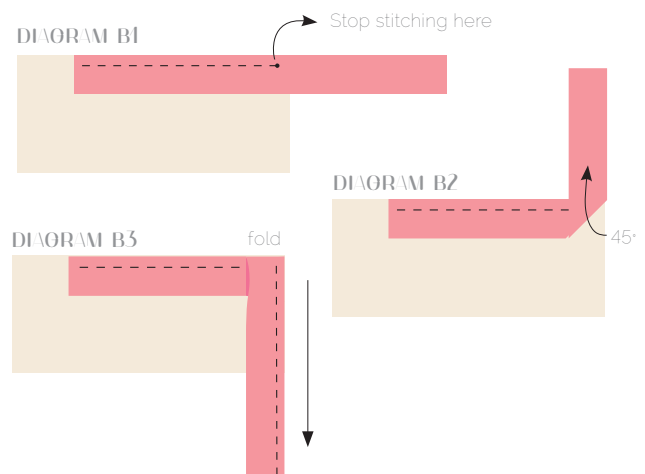
- © Place BACKING FABRIC on a large surface wrong side up. Stretch it with masking tape against that surface.
- © Place BATTING on top of backing fabric.
- © Place TOP on top of the batting with right side facing up. Smooth away wrinkles using your hands.
- © Pin all layers together and baste with basting thread, using long stitches. You can also use safety pins to join the layers.
- © Machine or hand quilt starting at the center and working towards the corners. Remember that quilting motifs are a matter of personal preference. Have fun choosing yours!
- © After you finish, trim off any excess fabric or batting, squaring the quilt to proceed to bind it.

BINDING

Sew rights sides together.

- Sew together your seven WOF x 1 ½' strips in fabric **B** to make a final strip 298' long. Fold strip in half and press. Start sewing the binding strip in the middle of one of the sides of the quilt, placing the strip right side down with the fold edge of your binding facing in and leaving an approximated 5" tail. Sew with ¼" seam allowance (using straight stitch), aligning the strip's raw edge with the quilt top's raw edge.
- © Stop stitching ¼" before the edge of the quilt (**DIAGRAM B1**). Clip the threads. Remove the quilt from under the machine presser foot. Fold the strip in a motion of 45° and upward, pressing with your fingers (**DIAGRAM B2**). Hold this fold with your finger, bring the strip down in line with the next edge, making a horizontal fold that aligns with the top edge of the quilt (**DIAGRAM B3**).

- © Start sewing at ¼" of the border, stitching all the layers. Do the same in the four corners of the quilt.
- © Stop stitching before you reach the last 5 or 6 inches. Cut the threads and remove the quilt from under the machine presser foot. Lay the loose ends of the binding flat along the quilt edge, folding the ends back on themselves where they meet. Press them together to form a crease. Using this crease as the stitching line, sew the two open ends of the binding with right sides together (you can help yourself marking with a pencil if the crease is difficult to see).
- © Trim seam to ¼" and press open. Complete the sewing. Turn binding to back of the quilt, turn raw edge inside and stitch by hand using blind stitch.



artgalleryfabrics.com

NOTE: While all possible care has been taken to ensure the accuracy of this pattern, we are not responsible for printing errors or the way in which individual work varies. Please read instructions carefully before starting the construction of this quilt. If desired, wash and iron your fabrics before starting to cut.