

featuring ABLOOM COLLECTION BY AGF STUDIO

X
X
X
X
X
X
X
X
X
X
X
X
X
X

flowerfield



FUSIONS



by AGF

FREE PATTERN

XXXXXXXXXXXXXXXXXXXXXXXXXXXX

flowerfield

QUILT DESIGNED BY AGF STUDIO *AGFstudio*



Abloom FUSION

FABRICS DESIGNED BY AGF STUDIO



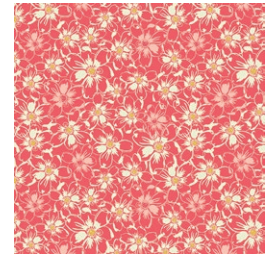
FUS-A-400
FLORET STAINS ABLOOM



FUS-A-401
FASHION SCENT ABLOOM



FUS-A-402
BOHEMIAN CHARMS ABLOOM



FUS-A-403
BED OF DAISIES ABLOOM



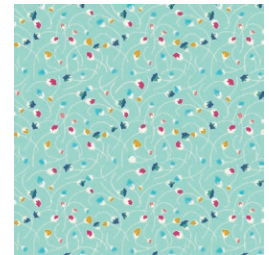
FUS-A-404
VINTAGE RUSH ABLOOM



FUS-A-405
BUDQUETTE ABLOOM



FUS-A-406
HE LOVES ME ABLOOM



FUS-A-407
NAIVETY ABLOOM



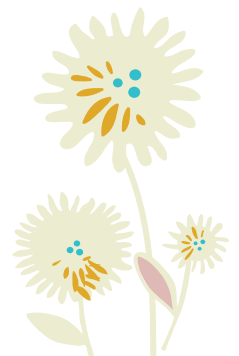
FUS-A-408
LADYLIKE ABLOOM



FUS-A-409
SEED PUFFS ABLOOM



PE-433
SNOW



flowerfield

FINISHED SIZE | 64" x 64"

FABRIC REQUIREMENTS

Fabric A	FUS-A-402-	¾ yd.
Fabric B	FUS-A-407-	½ yd.
Fabric C	FUS-A-403-	½ yd.
Fabric D	FUS-A-401-	½ yd.
Fabric E	FUS-A-400-	½ yd.
Fabric F	FUS-A-404-	½ yd.
Fabric G	FUS-A-409-	½ yd.
Fabric H	FUS-A-405-	½ yd.
Fabric I	PE-433-	3 ½ yd.

BACKING FABRIC
FUS-A-408 4 yds.
BINDING FABRIC
Fabric **A**- Included

CUTTING DIRECTIONS

¼" seam allowances are included.

- Sixteen (16) 4 7/8" squares from Fabric **A, B, C, D, E, F, G, and H**
- Thirty Two (32) 2" squares from Fabric **A, B, C, D, E, F, G, and H**
- Two Hundred Fifty Six (256) 2" squares from Fabric **I**
- Hundred Twenty Eight (128) 4 7/8" squares from Fabric **I**

CONSTRUCTION

Sew all rights sides together with ¼" seam allowance.

- To create two half square triangles with Fabric **A** and Fabric **I**, take 4 7/8" x 4 7/8" squares from both fabrics. (**DIAGRAM 1**)



DIAGRAM 1

XX

- Place on top with right sides together! Draw a diagonal line from one corner to the other.
- Sew on each side of the line you drew at 1/4". (**DIAGRAM 2**)

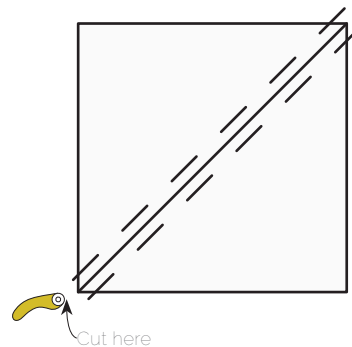


DIAGRAM 2

Cut on your diagonal line. Press seams open. (**DIAGRAM 3**)

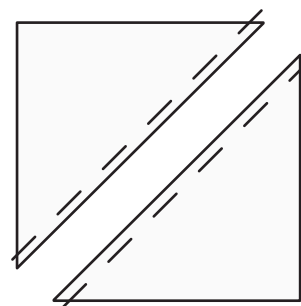


DIAGRAM 3

- You will need thirty two (32) **A/I, B/I, C/I, D/I, E/I, F/I, G/I, and H/I** HST's.

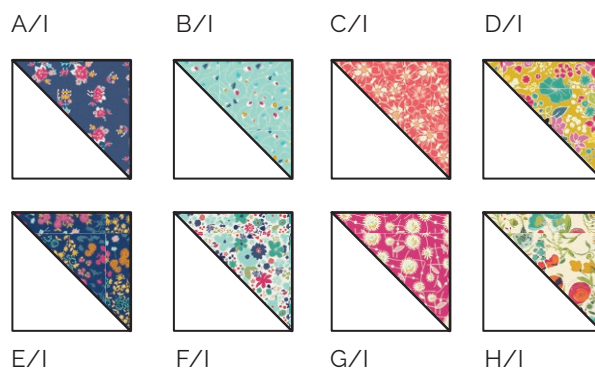


DIAGRAM 4

XX

BLOCK CONSTRUCTION

- Draw a diagonal line on the wrong side of your 2" squares with a fabric marking pen.
- Place them to each corner of your **A/I** HST with right sides touching.
- Sew on the line you drew and trim excess fabric at 1/4". (Diagram 5)
- Repeat this process to make three more of these blocks.



DIAGRAM 5

- Follow Diagram 6 to put together your four units.
- Repeat this same process with your remaining HST's and 2" squares.

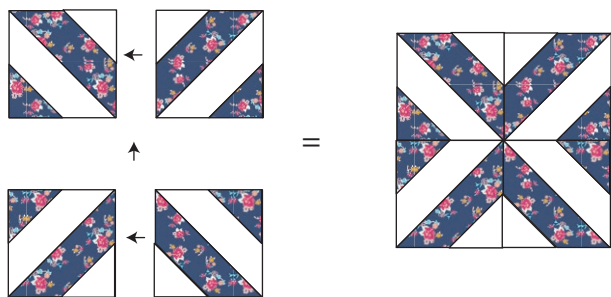
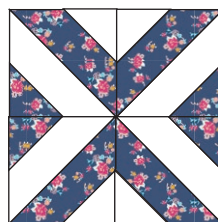


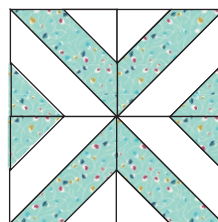
DIAGRAM 6

- You will need eight of each block! (Diagram 7)

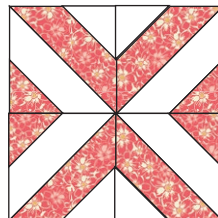
Block A



Block B



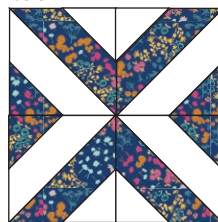
Block C



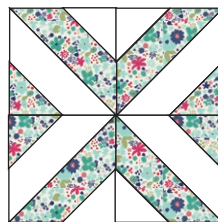
Block D



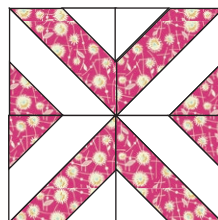
Block E



Block F



Block G



Block H

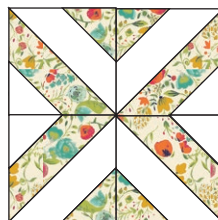


DIAGRAM 7

ASSEMBLING THE TOP

- Place your blocks into rows following Diagram 8.
- Sew all your rows together matching up seams.
- Follow quilt illustration as a guide.

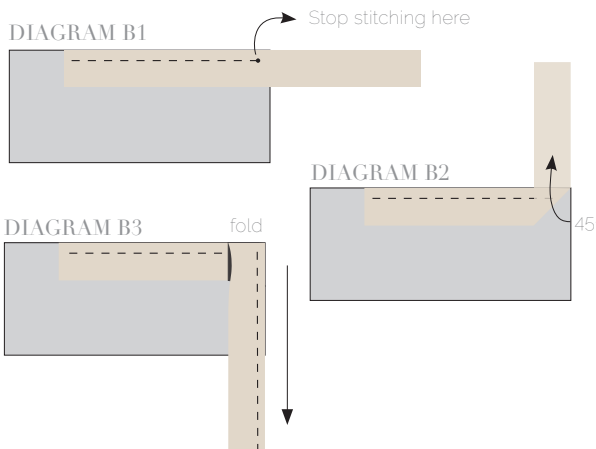
A	B	C	D	E	F	G	H
B	C	D	E	F	G	H	A
C	D	E	F	G	H	A	B
D	E	F	G	H	A	B	C
E	F	G	H	A	B	C	D
F	G	H	A	B	C	D	E
G	H	A	B	C	D	E	F
H	A	B	C	D	E	F	G

DIAGRAM 8

QUILT ASSEMBLY

Sew rights sides together.

- Place BACKING FABRIC on a large surface wrong side up. Stretch it with masking tape against that surface.
- Place BATTING on top of backing fabric.
- Place TOP on top of the batting with right side facing up. Smooth away wrinkles using your hands.
- Pin all layers together and baste with basting thread, using long stitches. You can also use safety pins to join the layers.
- Machine or hand quilt starting at the center and working towards the corners. Remember that quilting motifs are a matter of personal preference. Have fun choosing yours!
- After you finished, trim excess of any fabric or batting, squaring the quilt to proceed to bind it.



BINDING

Sew rights sides together.

- Cut enough strips $1\frac{1}{2}$ ' wide by the width of the fabric **A** to make a final strip 266' long. Start sewing the binding strip in the middle of one of the sides of the quilt, placing the strip right side down and leaving an approximated 5' tail. Sew with $\frac{1}{4}$ ' seam allowance (using straight stitch), aligning the strip's raw edge with the quilt top's raw edge.
- Stop stitching $\frac{1}{4}$ ' before the edge of the quilt (**DIAGRAM B 1**). Clip the threads. Remove the quilt from under the machine presser foot. Fold the strip in a motion of 45° and upward, pressing with your fingers (**DIAGRAM B2**). Hold this fold with your finger, bring the strip down in line with the next edge, making a horizontal fold that aligns with the top edge of the quilt (**DIAGRAM B3**). Start sewing at $\frac{1}{4}$ ' of the border, stitching all the layers. Do the same in the four corners of the quilt.
- Stop stitching before you reach the last 5 or 6 inches. Cut the threads and remove the quilt from under the machine presser foot. Lay the loose ends of the binding flat along the quilt edge, folding the ends back on themselves where they meet. Press them together to form a crease. Using this crease as the stitching line, sew the two open ends of the binding with right sides together (you can help yourself marking with a pencil if the crease is difficult to see).
- Trim seam to $\frac{1}{4}$ ' and press open. Complete the sewing. Turn binding to back of the quilt, turn raw edge inside and stitch by hand using blind stitch.



artgalleryfabrics.com

NOTE: While all possible care has been taken to ensure the accuracy of this pattern, We are not responsible for printing errors or the way in which individual work varies. Please read instructions carefully before starting the construction of this quilt. If desired, wash and iron your fabrics before starting to cut.