



FLUTTER

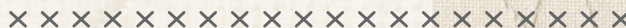


FUSIONS



by AGF

FREE PATTERN



FLUTTER

QUILT DESIGNED BY AGF STUDIO *AGFstudio*

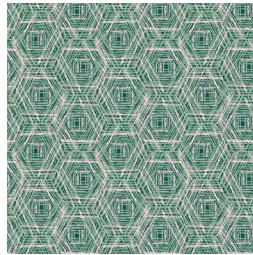


FLORALIA FUSION

FABRICS DESIGNED BY AGF STUDIO



FUS-F-1000
BRAVE BLOOMED CITY



FUS-F-1001
TRACERY FLORALIA



FUS-F-1002
FEMME METALE FLORALIA



FUS-F-1003
LINE DRAWINGS FLORALIA



FUS-F-1004
SPARKLER FLORALIA



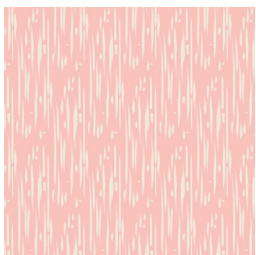
FUS-F-1005
ROADSIDE GUIDES FLORALIA



FUS-F-1006
BLOSSOM DRIFT FLORALIA



FUS-F-1007
WINGSPAN FLORALIA



FUS-F-1008
RETRO HARMONY CITY



FUS-F-1009
SPANISH PETALS FLORALIA





FINISHED SIZE | 61" x 69"

FABRIC REQUIREMENTS

Fabric A	FUS-F-1002	1/3 yd.
Fabric B	FUS-F-1006	1/3 yd.
Fabric C	FUS-F-1008	1/3 yd.
Fabric D	FUS-F-1001	1/4 yd.
Fabric E	FUS-F-1000	1/2 yd.
Fabric F	FUS-F-1005	3/4 yd.
Fabric G	FUS-F-1007	1 yd.
Fabric H	PE-428	3 1/2 yd.

BACKING FABRIC

FUS-A-408 5 yds. (*Suggested*)

BINDING FABRIC

FUS-F-1005 (Fabric **F**) (*Included*)

CUTTING DIRECTIONS

1/4" seam allowances are included.

- Six (6) WOF x 1 1/2" strips from fabrics **A**, **B** and **C**.
- Four (4) WOF x 1 1/2" strips from fabric **D**.
- Two (2) WOF x 7 1/2" strips from fabric **E**.
- Seven (7) WOF x 1 1/2" strips from fabric **F**.
- Three (3) WOF x 2 1/2" strips from fabric **F**.
- Three (3) 4 1/2" x 2 1/2" rectangles from fabric **F**.
- Forty seven (47) WOF x 1 1/2" strips from fabric **H**.
- Two (2) 4 1/2" x 1 1/2" rectangles from fabric **H**.
- Two (2) WOF x 2" strip from fabric **H**.
- Two (2) 4 1/2" x 2" rectangles from fabric **H**.
- Eight (8) WOF x 5 1/2" strips from fabric **H**.

CONSTRUCTION

Sew all rights sides together with 1/4" seam allowance.

- Take twenty four (24) WOF x 1 1/2" strips from fabric **H**, six (6) WOF x 1 1/2" strips from fabric **A**, six (6) WOF x 1 1/2" strips from fabric **B**, and six (6) WOF x 1 1/2" strips from fabric **C**.
- Make the following strip sets three times:
- Strip set 1: **H** > **A** > **H** > **B** > **H** > **C** > **H**
- Strip set 2: **H** > **C** > **H** > **A** > **H** > **B** > **H**
- Subcut each strip set every 11 1/2" until you get eight (8) 7 1/2" x 11 1/2" blocks of each strip set.

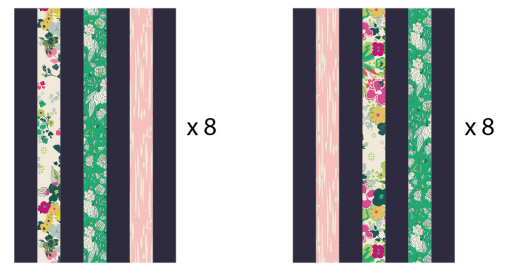


DIAGRAM 1

- Take six (6) WOF x 1 1/2" strips from fabric **H**.
- Subcut them into 7 1/2" x 1 1/2" strips.
- Join the strips to the previous blocks to get **Block A** and **Block B** as shown in Diagram 2.

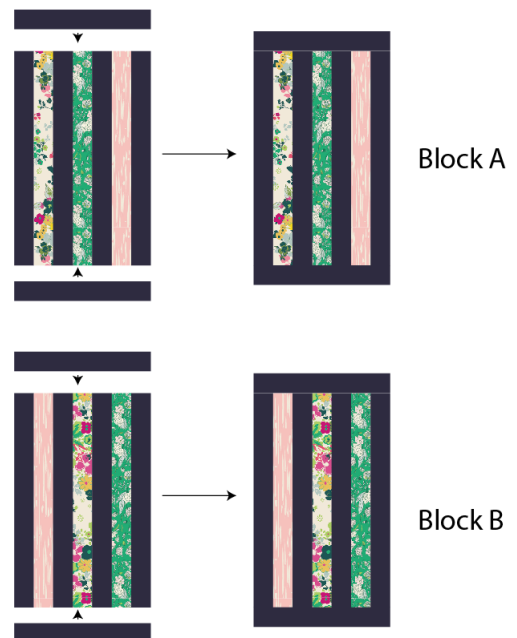


DIAGRAM 2

