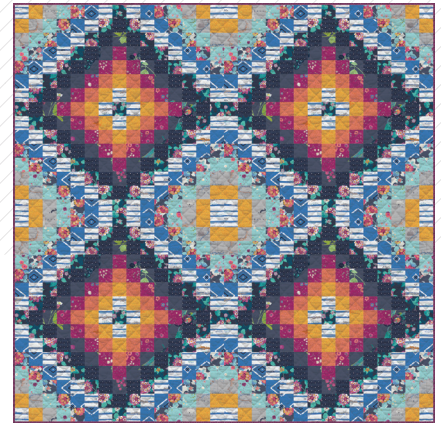




# Soleil

*Katarina Roccella*

QUILT DESIGNED BY KATARINA ROCCELLA



# Mediterraneo

FABRICS DESIGNED BY KATARINA ROCCELLA

MADDALENA GETAWAY



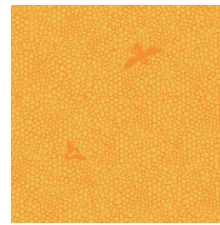
MED-22600  
LANTANA TEAL



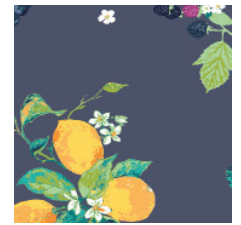
MED-22601  
ZANAFI AQUA



MED-22602  
OLIVE FOLIAGE



MED-22604  
HONEYCOMB MIELE



MED-22605  
FRUTTERIA BLEU



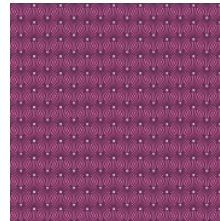
MED-22606  
COASTAL GARDEN CIELO



MED-22607  
HERCULANEUM



MED-22609  
BOUGAINVILLUSH



MED-22611  
SHELL BLAZE AUBERGINE



MED-22612  
DJULOVI DISTRESSED

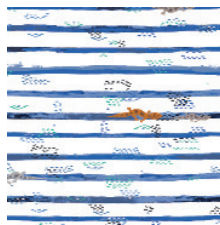
MARRAKESH ESCAPE



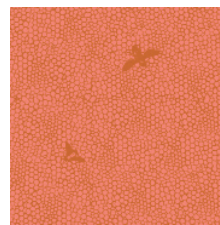
MED-32600  
LANTANA COBALT



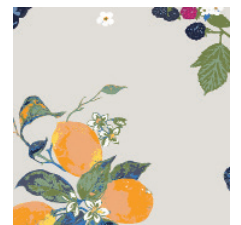
MED-32601  
ZANAFI AZURE



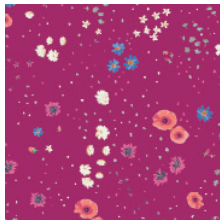
MED-32603  
GECKO TRAILS



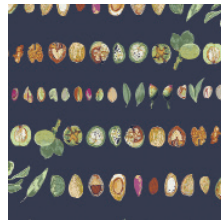
MED-32604  
HONEYCOMB NECTAR



MED-32605  
FRUTTERIA SAND



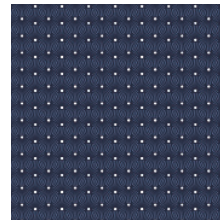
MED-32606  
COASTAL GARDEN VIOLET



MED-32608  
NUT MEDLEY



MED-32610  
CARTOGRAPHE



MED-32611  
SHELL BLAZE NIGHT



MED-32612  
DJULOVI PARCHMENT





FINISHED SIZE | 60 ½" x 60 ½"

## FABRIC REQUIREMENTS

Fabric <b>A</b>	MED-32603	¾ yd.
Fabric <b>B</b>	MED-22604	¾ yd.
Fabric <b>C</b>	MED-32601	½ yd.
Fabric <b>D</b>	MED-22600	¾ yd.
Fabric <b>E</b>	MED-32611	½ yd.
Fabric <b>F</b>	MED-32606	¾ yd.
Fabric <b>G</b>	MED-32604	½ yd.
Fabric <b>H</b>	MED-32610	½ yd.
Fabric <b>I</b>	MED-22606	¾ yd.
Fabric <b>J</b>	MED-32600	½ yd.
Fabric <b>K</b>	MED-22605	½ yd.
Fabric <b>L</b>	MED-22611	½ yd.

### BACKING FABRIC

MED-22612- 4 yds. *(Suggested)*

### BINDING FABRIC

MED-22611 (Fabric **L**) *(included)*

## CUTTING DIRECTIONS

¼" seam allowances are included.  
WOF means width of fabric.

Nine (9) 2 ½" x WOF strips from Fabric **A**

Four (4) 2 ½" x WOF strips from Fabrics **B, F, & I**

Six (6) 2 ½" x WOF strips from Fabrics **C & E**

Eight (8) 2 ½" x WOF strips from Fabric **D**

Three (3) 2 ½" x WOF strips from Fabrics **G & H**

Five (5) 2 ½" x WOF strips from Fabrics **J & K**

Next, subcut the WOF strips into squares as follows:

One hundred forty-four (144) 2 ½" squares from Fabric **A**

Sixty-four (64) 2 ½" squares from Fabrics **B, F, & I**

Ninety-six (96) 2 ½" squares from Fabrics **C & E**

One hundred sixteen (116) 2 ½" squares from Fabric **D**

Forty-eight (48) 2 ½" squares from Fabrics **G & H**

Eighty (80) 2 ½" squares from Fabrics **J & K**

## CONSTRUCTION

*Sew all rights sides together with ¼" seam allowance.*

### Assembling the Blocks:

- All sewing is right sides together with ¼" seam allowance, unless noted otherwise.
- Start by joining the squares for the horizontal rows. Some fabrics are directional, check to make sure the print direction is correct while pinning and sew together.
- Sew together the fabric squares in the following order for the rows:
  - Row 1 & Row 15: A > B > H > I > J > C > A > D > A > C > J > I > H > B > A
  - Row 2 & Row 14: B > H > I > J > C > A > D > E > D > A > C > J > I > H > B
  - Row 3 & Row 13: H > I > J > C > A > D > E > K > E > D > A > C > J > I > H
  - Row 4 & Row 12: I > J > C > A > D > E > K > F > K > E > D > A > C > J > I
  - Row 5 & 11: J > C > A > D > E > K > F > G > F > K > E > D > A > C > J
  - Row 6 & 10: C > A > D > E > K > F > G > B > G > F > K > E > D > A > C
  - Row 7 & 9: A > D > E > K > F > G > B > A > B > G > F > K > E > D > A
  - Row 8: D > E > K > F > G > B > A > D > A > B > G > F > K > E > D
- Sew your rows together to complete your blocks. Press seams either open or to one side, according to your preference. Pressing the seams open eliminates bulk and makes it easier to match the seams.
- Make four blocks







