



FREE SPIRIT



FUSIONS



by AGF

FREE PATTERN







# FREE SPIRIT

QUILT DESIGNED BY *AGFstudio*

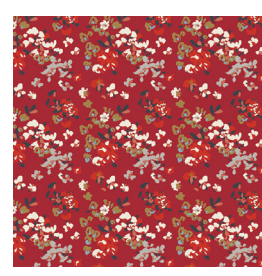


## *Trinkets* FUSION

FABRICS DESIGNED BY *AGFstudio*



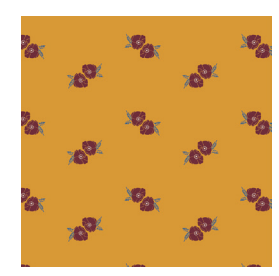
FUS-T-1405  
MEADOW TRINKETS



FUS-T-1402  
VINTAGE FLORETS TRINKETS



FUS-T-1407  
FLOWER GLORY TRINKETS



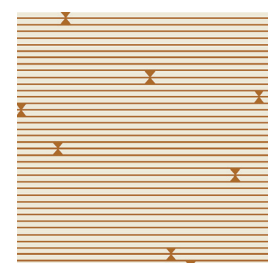
FUS-T-1404  
FLOWER STAMP TRINKETS



FUS-T-1409  
FLORAL UNIVERSE TRINKETS



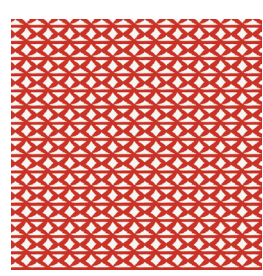
FUS-T-1403  
MANDALA HARMONY TRINKETS



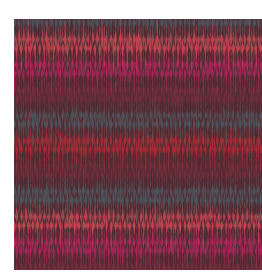
FUS-T-1401  
GRAN PIANO TRINKETS



FUS-T-1400  
FLOWERED ENGRAMS TRINKETS



FUS-T-1406  
WALLPAPER TRINKETS



FUS-T-1408  
LOOMING LOVE TRINKETS





FINISHED SIZE | 60" x 76"

## FABRIC REQUIREMENTS

Fabric <b>A</b>	FUS-T-1400	5/8 yd.
Fabric <b>B</b>	FUS-T-1401	1 1/3 yd.
Fabric <b>C</b>	FUS-T-1402	1/2 yd.
Fabric <b>D</b>	FUS-T-1403	1/2 yd.
Fabric <b>E</b>	FUS-T-1404	1 yd.
Fabric <b>F</b>	FUS-T-1405	5/8 yd.
Fabric <b>G</b>	FUS-T-1406	1/2 yd.
Fabric <b>H</b>	FUS-T-1407	1/2 yd.
Fabric <b>I</b>	FUS-T-1408	3/8 yd.
Fabric <b>J</b>	FUS-T-1409	1/2 yd.
Fabric <b>K</b>	PE-427	3/8 yd.
Fabric <b>L</b>	PE-468	1/4 yd.
Fabric <b>M</b>	PE-456	5/8 yd.

### BACKING FABRIC

FUS-T-1404 4 yds. *(Suggested)*

### BINDING FABRIC

PE-456 (Fabric **M**) *(Included)*

## CUTTING DIRECTIONS

1/4" seam allowances are included.

- Two (2) 20" x 10" rectangles from fabrics **A, C, D, E, G, J**
- Two (2) 10 3/8" squares from fabrics **A, B, E, F, I, H**
- Four (4) 4 7/8" squares from fabrics **A, C, D, G, J**
- Twenty-Four (24) 3" squares from fabrics **B, L**
- Five (5) 30" x 5" strips from fabrics **B**
- Four (4) 8 1/2" x 4 1/2" rectangles from fabrics **B, E, F, H, I**
- Eleven (11) 5 1/2" x 2 1/2" rectangles from fabrics **E, F**
- Twenty-eight (28) flower template from fabric **K**
- Two (2) 39 1/2" x 1 1/2" strips from fabric **M**
- Two (2) 36 1/2" x 1 1/2" strips from fabric **M**
- Twenty (20) 1 1/2" x 2 1/2" strips from fabric **M**
- Four (4) 2 1/2" squares from fabric **M**
- Take (1) 39 1/2" x 3 1/2" strips from fabric **M**

## CONSTRUCTION

Sew all rights sides together with 1/4" seam allowance.

- Take all the 20" x 10" rectangles available and all the 10 3/8" Squares available.
- Start making two flying geese from each of the following fabric combinations.
- (2) **DI** (2) **AF** (2) **JE** (2) **GH** (2) **CB**
- Set aside



DIAGRAM 1

- Take all the 8 1/2" x 4 1/2" rectangles available and all the 4 7/8" Squares available.
- Make four flying geese from each of the following fabric combinations.
- (4) **FA** (4) **HG** (4) **BC** (4) **EJ**
- Make two flying geese from fabrics (2) **ID**
- Set aside



DIAGRAM 2



- Take six 3' squares from fabrics **B** and **L**
- Sew them together alternating each fabric
- **BLBLBLBLBLBL**
- Repeat the same BL strip more three times in order to end up with a total of 4 BL strips.

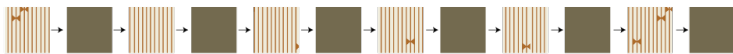


DIAGRAM 3

- Take five 30' x 5'' strips from fabrics **B**
- Sew them together with the **BL** strips alternating the strips

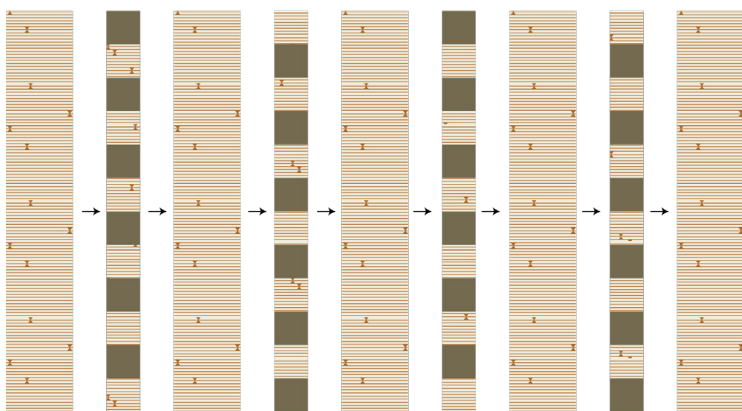


DIAGRAM 4

- Using steam a seam start with the twenty eight flower templates appliqué from fabric **B** referring to the diagram below.
- Give the appliqué a top stitch to secure them.

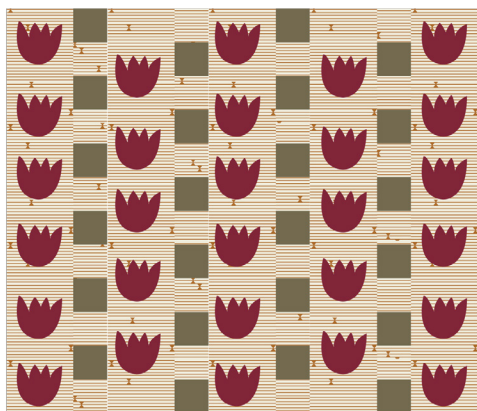


DIAGRAM 5

- Take five 5½' x 2 ½' from fabrics **E** and **F** and ten 1½' x 2½' from fabric **M**
- Attach half of the pieces in the order **EMFMEMFMEM**
- Attach the other half in the order **FMEMFMEMFM**



DIAGRAM 6

- Now Attach the strips on the left and right sides of the flower appliqué piece.

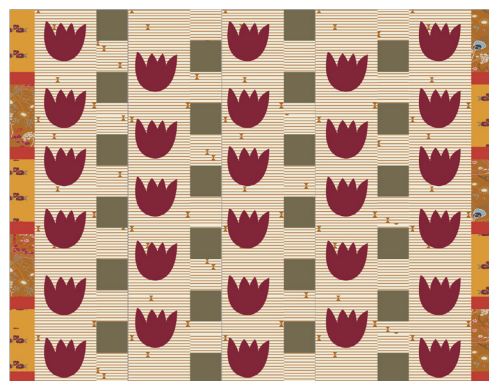


DIAGRAM 7

- Take six 5½' x 2 ½' from fabrics **E** and **F**, ten 1½' x 2½' from fabric **M** and four 2 ½' squares from fabric **M**
- Attach them in the order **MFMEMFMEMFMEM**
- Make two strips with the same combination.



DIAGRAM 8

- Attach the strips on the top and bottom sides of the flower appliqué piece.

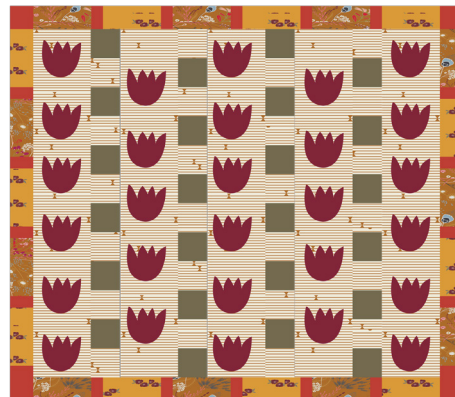


DIAGRAM 9

- Take two (2)  $36\frac{1}{2}' \times 1\frac{1}{2}'$  strips from fabric **M**
- Attach them to the Top and bottom edge of the flower appliqué piece
- Take two (2)  $39\frac{1}{2}' \times 1\frac{1}{2}'$  strips from fabric **M**
- Attach them to the left and right edge of the flower appliqué piece

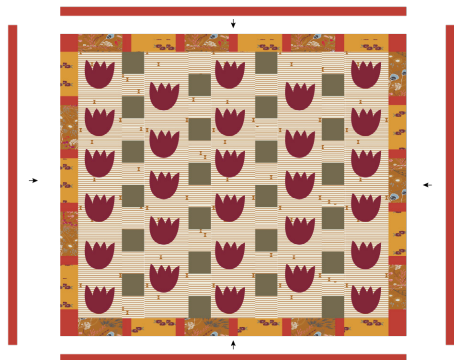


DIAGRAM 10

## ASSEMBLING THE TOP

- Attach the small flying geese sets on the right side of the flower appliqué piece.
- Use the Big flying geese for the top and bottom rows.
- Please refer to the cover picture for flying geese placement.

## QUILT ASSEMBLY

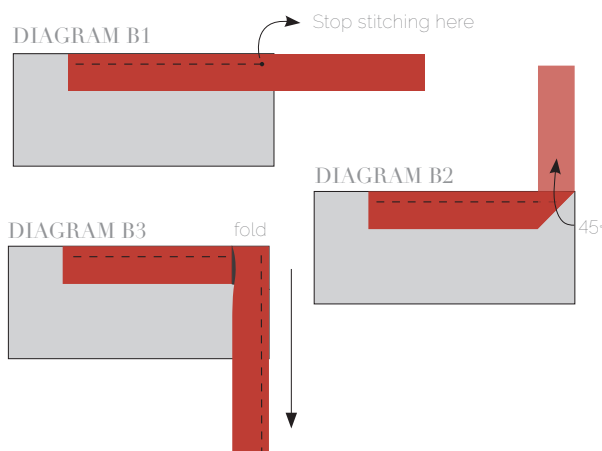
*Sew rights sides together.*

- Place BACKING FABRIC on a large surface wrong side up. Stretch it with masking tape against that surface.
- Place BATTING on top of backing fabric.
- Place TOP on top of the batting with right side facing up. Smooth away wrinkles using your hands.
- Pin all layers together and baste with basting thread, using long stitches. You can also use safety pins to join the layers.
- Machine or hand quilt starting at the center and working towards the corners. Remember that quilting motifs are a matter of personal preference. Have fun choosing yours!
- After you finished, trim excess of any fabric or batting, squaring the quilt to proceed to bind it.

## BINDING

*Sew rights sides together.*

- Cut enough strips  $1\frac{1}{2}'$  wide by the width of the fabric **M** to make a final strip  $272'$  long. Start sewing the binding strip in the middle of one of the sides of the quilt, placing the strip right side down and leaving an approximated  $5'$  tail. Sew with  $\frac{1}{4}'$  seam allowance (using straight stitch), aligning the strip's raw edge with the quilt top's raw edge.
- Stop stitching  $\frac{1}{4}'$  before the edge of the quilt (**DIAGRAM B1**). Clip the threads. Remove the quilt from under the machine presser foot. Fold the strip in a motion of  $45^\circ$  and upward, pressing with your fingers (**DIAGRAM B2**). Hold this fold with your finger, bring the strip down in line with the next edge, making a horizontal fold that aligns with the top edge of the quilt (**DIAGRAM B3**). Start sewing at  $\frac{1}{4}'$  of the border, stitching all the layers. Do the same in the four corners of the quilt.
- Stop stitching before you reach the last 5 or 6 inches. Cut the threads and remove the quilt from under the machine presser foot. Lay the loose ends of the binding flat along the quilt edge, folding the ends back on themselves where they meet. Press them together to form a crease. Using this crease as the stitching line, sew the two open ends of the binding with right sides together (you can help yourself marking with a pencil if the crease is difficult to see).
- Trim seam to  $\frac{1}{4}'$  and press open. Complete the sewing. Turn binding to back of the quilt, turn raw edge inside and stitch by hand using blind stitch.





FEEL THE DIFFERENCE

[artgalleryfabrics.com](http://artgalleryfabrics.com)

*NOTE: While all possible care has been taken to ensure the accuracy of this pattern, We are not responsible for printing errors or the way in which individual work varies. Please read instructions carefully before starting the construction of this quilt. If desired, wash and iron your fabrics before starting to cut.*

© 2018 Courtesy of Art Gallery Quilts LLC. All Rights Reserved.

TEMPLATE

